

FREE  
PATTERNS

Aidez

knit in **Berroco Peruvia® Quick** | [color info](#)  
Skill level: **Intermediate**



[click to enlarge](#)




[click to enlarge](#)

[Chart](#) | [Schematic](#) |  
[Abbreviations & Terms](#)



Peruvia Quick

Find this Yarn 

UPDATED  
10/14/10



Aidez is a feminine fitted cardigan that has all the cozy antique appeal of traditional Aran texture.



### PDF Pattern Instructions

(If you can't open this PDF file you need Adobe Acrobat Reader. Get it [here](#).)

Shown in size Small

### SIZES

Directions are for women's size X-Small. Changes for sizes Small, Medium, Large, 1X and 2X are in parentheses

### FINISHED MEASUREMENTS

Bust (closed) – 32(36-40-44-48-52)''

Length – 26½(27-27-27½-27½- 28)''

### MATERIALS

8(9-10-11-12-13) Hanks **BERROCO PERUVIA QUICK** (100 grs), #9104 Oats

Straight knitting needles, size 10½ (6.50 mm) OR SIZE TO OBTAIN GAUGE

Cable needle  
6 St markers

### **GAUGE**

15 sts = 4"; 16 rows = 4" in St st  
TO SAVE TIME, TAKE TIME TO CHECK GAUGE

### **STITCH GLOSSARY**

**FDKC** (Front double knit cross)

Sl 2 sts to cn and hold in FRONT, k2, then k2 from cn

**BC** (Back Cross)

Sl next st to cn and hold in BACK, k2, then p1 from cn

**FC** (Front cross)

Sl 2 sts to cn and hold in FRONT, k1, then k2 from cn

**FPC** (Front purl cross)

Sl 2 sts to cn and hold in FRONT, p1, then k2 from cn

**C8** (Cable 8)

Sl 3 sts to cn and hold in BACK, k1, then p1, k1, p1 from cn; sl next st to cn and hold in FRONT, k1, p1, k1, then k1 from cn

**RT2** (Right twist 2)

K2 tog leaving sts on LH needle, then k the first st again, slipping sts off needle

**LT2** (Left twist 2)

Skip next st, k following st TBL leaving st on LH needle, then k skipped st through front loop, slipping sts off needle

**RIGHT CROSS-STITCH CABLE** (Worked over 8 sts)

**Row 1 (RS):** P2, k4, p2.

**Row 2:** K2, p4, wrapping yarn twice around needle for each purl st, k2.

**Row 3:** P2, sl 4 WYIB, dropping extra 4 wraps; return these 4 sts to LH needle, pass the last 2 sts slipped over the first 2 and k them in this crossed position, p2.

**Row 4:** K2, p4, k2.

Rep these 4 rows for Right Cross-St Cable.

**LEFT CROSS-STITCH CABLE** (Worked over 8 sts)

**Row 1 (RS):** P2, k4, p2.

**Row 2:** K2, p4, wrapping yarn twice around needle for each purl st, k2.

**Row 3:** P2, sl 4 WYIB, dropping extra 4 wraps; with point of LH needle, pass the first 2 sts slipped over the last 2; return these 4 sts to LH needle and k them in this crossed position, p2.

**Row 4:** K2, p4, k2.

Rep these 4 rows for Left Cross-Stitch Cable.

**TRELLIS PATTERN** (Worked over 30 sts)

**Row 1 (RS):** P6, FDKC, p10, FDKC, p6.

**Row 2 and all WS rows:** K the k sts and p the p sts as they face you.

**Row 3:** P5, BC, FC, p8, BC, FC, p5.

**Row 5:** P4, \* BC, k1, p1, FC, \* p6, rep between \*'s once more, p4.

**Row 7:** P3, \* BC, (k1, p1) twice, FC, \* p4, rep between \*'s once more, p3.

**Row 9:** P2, \* BC, (k1, p1) 3 times, FC, \* p2, rep between \*'s once more, p2.

**Row 11:** P1, \* BC, (k1, p1) 4 times, FC, rep from \* once more, end p1.

**Row 13:** P1, k2, (k1, p1) 5 times, FDKC, (k1, p1) 5 times, k2, p1.

**Row 15:** P1, \* FPC, (k1, p1) 4 times, BC, rep from \* once more, end p1.

**Row 17:** P2, \* FPC, (k1, p1) 3 times, BC, \* p2, rep between \*'s once more, end p2.

**Row 19:** P3, \* FPC, (k1, p1) twice, BC, \* p4, rep between \*'s once more, end p3.

**Row 21:** P4 \* FPC, k1, p1, BC, \* p6, rep between \*'s once more, end p4.

**Row 23:** P5, FPC, BC, p8, FPC, BC, p5.

**Row 24:** Rep Row 2.

Rep these 24 rows for Trellis Pat.

**EAR OF CORN PATTERN** (Worked over 8 sts)

**Row 1 (RS):** P2, RT2, LT2, p2.

**Row 2:** K2, p4, k2.

Rep these 2 rows for Ear of Corn Pat.

**SEED WISHBONE PATTERN** (Worked over 12 sts)

**Row 1 (RS):** P2, C8, p2.

**Rows 2, 4 and 6:** K2, (p1, k1) 3 times, p2, k2.

**Rows 3 and 5:** P2, (k1, p1) 3 times, k2, p2.

**Row 7:** P2, k1, p1, k3, p1, k2, p2.

**Row 8:** K2, p1, k1, p3, k1, p2, k2.

Rep these 8 rows for Seed Wishbone Pat.

## BACK

With straight needles, cast on 65(71-77-83-89-95) sts.

**Ribbing: Row 1 (RS):** K1, \* p1, k1, rep from \* across.

**Row 2:** P1, \* k1, p1, rep from \* across. Rep these 2 rows until piece measures 3" from beg, end on RS. Knit the next row, inc 1 st at end – 66(72-78-84-90-96) sts.

**Establish Pat Sts: Row 1 (RS):** K4(7-10-13-16-19), k1TBL, place marker, work Row 1 of Right Cross-St Cable over 8 sts, place marker, k1TBL, k3, k1TBL, place marker, work Row 1 of Trellis Pat over 30 sts, place marker, k1TBL, k3, k1TBL, place marker, work Row 1 of Left Cross-St Cable over 8 sts, place marker, k1TBL, k to end.

**Row 2:** P to 1 st before first marker, p1TBL, work Row 2 of Left Cross-St cable to next marker, p1TBL, p3, p1TBL, work Row 2 of Trellis Pat to next marker, p1TBL, p3, p1TBL, work Row 2 of Right Cross-St Cable to last marker, p1TBL, p to end. Work even in pat as established until piece measures 5" from beg, end on WS. Dec 1 st each side of next row, then every 6½" twice more – 60(66-72-78-84-90) sts. Work even until piece measures 18" from beg, end on WS.

**Shape Raglan Armholes:** Bind off 3(3-4-4-5-6) sts at beg of the next 2 rows, then 0(0-0-2-4-5) sts at beg of the following 2 rows – 54(60-64-66-66-68) sts. Work 2(2-0-0-0-0) rows even, end on WS.

**Dec Row (RS):** K2, k2 tog, work to last 4 sts, SSK, k2 – 52(58-62-64-64-66) sts. Rep this dec every 4th row 3(1-0-0-0-0) times more, then every RS row 9(14-17-18-18-19) times, end on WS. Bind off remaining 28 sts for back neck.

## LEFT FRONT

With straight needles, cast on 37(39-43-45-49-51) sts. Work in ribbing same as back for 3", end on RS. Knit the next row, inc 0(1-0-1-0-1) st at end – 37(40-43-46-49-52) sts.

**Establish Pat Sts: Row 1 (RS):** K3(6-9-12-15-18), k1TBL, place marker, work Row 1 of Ear of Corn Pat over 8 sts, place marker, k1TBL, work Row 1 of Seed Wishbone over 12 sts, k1TBL, place marker, work Row 1 of Ear of Corn Pat over 8 sts, place marker, k1TBL, k2.

**Row 2:** P2, p1TBL, work Row 2 of Ear of Corn Pat to next marker, p1TBL, work Row 2 of Seed Wishbone over 12 sts, p1TBL, work Row 2 of Ear of Corn Pat to last marker, p1TBL, p to end. Work even in pat as established until piece measures 5" from beg, end on WS. Dec 1 st at beg of the next row, then at same edge every 6½" twice more – 34(37-40-43-46-49) sts. Work even until piece measures 18" from beg, end on WS.

**Shape Raglan Armhole:** Bind off 3(3-4-4-5-6) sts at beg of the next row, then 0(0-0-2-4-5) sts at beg of the following RS row – 31(34-36-37-37-38) sts. Work 3(3-1-1-1-1) row(s) even, end on WS.

**Dec Row (RS):** K2, k2 tog, work to end – 30(33-35-36-36-37) sts. Rep this dec every 4th row 3(1-0-0-0-0) times more, then every RS row 9(14-17-18-18-19) times – 18 sts. Note: When only 6 sts of Seeded Wishbone Pat remain, work these sts at k4, p2 on RS rows and as k2, p4 on WS rows. Work even in pat as established on 18 sts for collar extension until piece measures **3¾"**, end on WS. Bind off.

### RIGHT FRONT

Work to correspond to left front, reversing all shaping and placement of pat sts. Bind off for armholes on WS rows. Work armhole decs at end of RS rows as SSK, k2.

### SLEEVES

With straight needles, cast on 33 sts. Work in ribbing same as back for 3", end on RS. Knit the next row, inc 1 st at end – 34 sts.

**Establish Pat St: Row 1 (RS):** K10, k1TBL, place marker, work Row 1 of Seeded Wishbone Pat over 12 sts, place marker, k1TBL, k to end.

**Row 2:** P to 1 st before first marker, p1TBL, work Row 2 of Seeded Wishbone Pat to last marker, p1TBL, p to end. Work in pat as established, inc 1 st each side every  $4\frac{1}{2}$ ( $3\frac{1}{2}$ - $2\frac{1}{4}$ - $2$ - $1\frac{1}{2}$ - $1\frac{1}{4}$ )" 3(4-6-7-9-10) times – 40(42-46-48-52-54) sts. Work even until sleeve measures 18" from beg, end on WS.

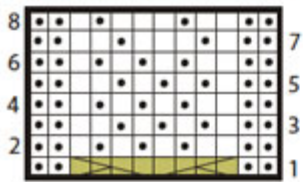
**Shape Raglan Cap:** Bind off 3(3-4-4-5-6) sts at beg of the next 2 rows, then 0(0-0-2-4-5) sts at beg of the following 2 rows – 34(36-38-36-34-32) sts. Work 2 rows even.

**Dec Row (RS):** K2, k2 tog, work to last 4 sts, SSK, k2 – 32(34-36-34-32-30) sts. Rep this dec every 4th row 1(1-0-2-3-5) times more, then every RS row **12(13-15-12-10-7)** times, **then k1, k2tog, ssk, k1** end on WS – 4 sts. Bind off.

### FINISHING

Sew raglan sleeve caps to raglan armhole edges. Sew side and sleeve seams. Sew bound-off edges of neck extensions tog. Sew inner edges of neck extensions to tops of sleeves and back neck edge with seam at center back neck.

SEED WISHBONE PATTERN



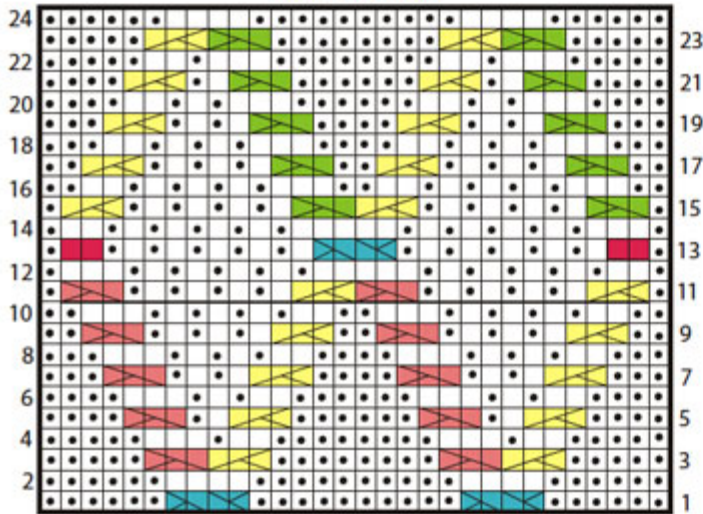
RIGHT CROSS-STITCH CABLE



LEFT CROSS-STITCH CABLE



TRELLIS PATTERN




EAR OF CORN PATTERN





KEY TO CHARTS


□ K on RS, p on WS


▣ P on RS, k on WS


 C8 - sl 3 sts to Cn and hold in BACK, k1, then p1, k1, p1 from cn; sl next st to cn and hold in FRONT, k1, p1, k1, then k1 from cn


 P4, wrapping yarn twice Around needle for each purl st

 SI 4 sts WYIB, dropping Extra 4 wraps; return these 4 sts to LH needle; pass the last 2 sts slipped over the first 2 then k4 in this crossed position


 SI 4 sts WYIB, dropping Extra 4 wraps; return these 4 sts to LH needle; pass the first 2 sts slipped over the last 2 then k4 in this crossed position


 FDKC - SI 2 sts to cn and Hold in FRONT, k2, then k2 from cn


 BC - SI next st to cn and hold in BACK, k2, then p1 from cn

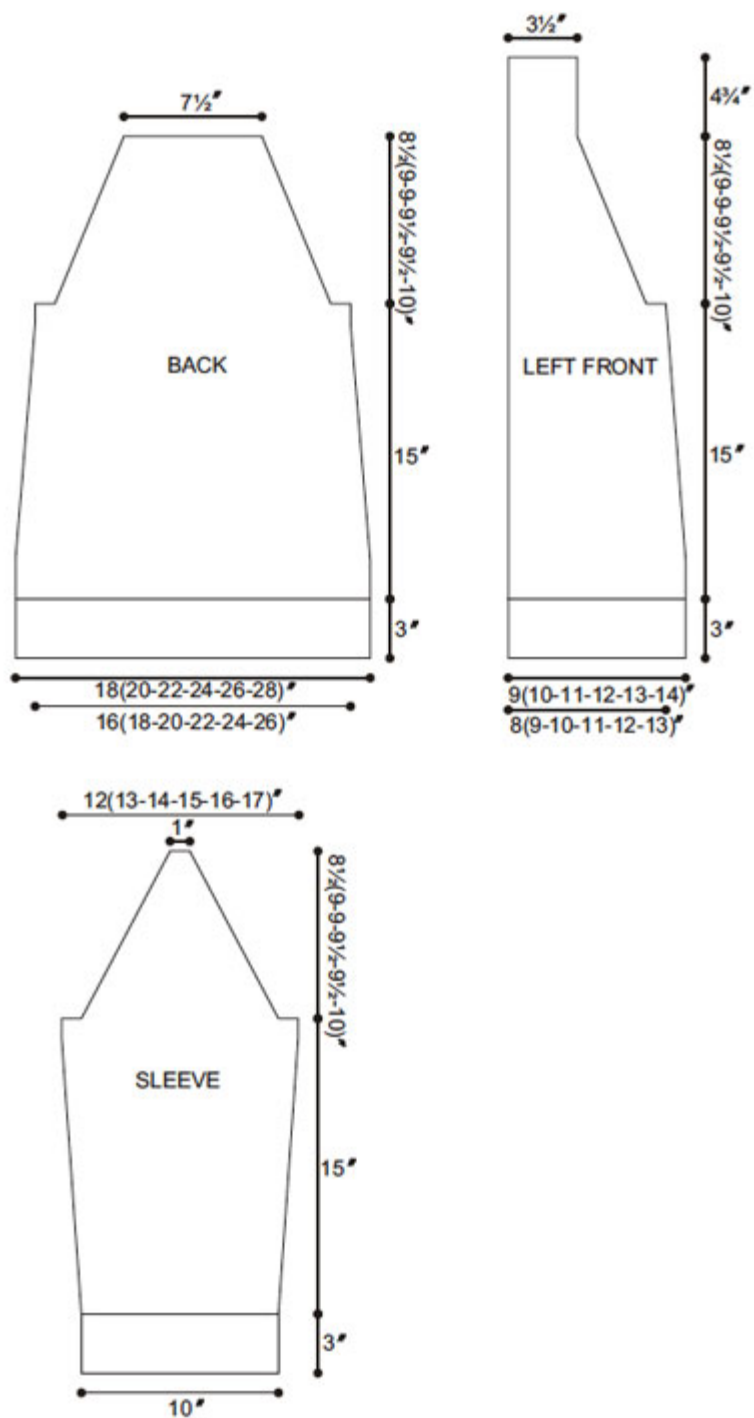
 FC - SI 2 sts to cn and hold in FRONT, k1, then k2 from cn

 K2

 FPC - SI 2 sts to cn and hold in FRONT, p1, then k2 from cn

 RT 2 - K2 tog, leaving sts on needle, then k first st again, slipping sts off needle

 LT 2 - Skip next st, k following st TBL, leaving st on LH needle, then k skipped st through front loop, slipping sts off needle



WEB EXCLUSIVE

[www.berroco.com](http://www.berroco.com)

[Home](#) | [Yarn Shops](#) | [Yarns](#) | [Free KnitBits®](#) | [New This Season](#) | [Free Patterns](#) | [Blog](#) | [Multimedia](#)  
[Pattern Corrections](#) | [Abbreviations & Terms](#) | [Links](#) | [Handeze® Glove](#) | [Scarf Central](#)  
[About Us](#) | [Privacy Statement](#) | [FAQs](#) | [Contact Us](#)

Berroco, Inc. P.O. Box 367, 14 Elmdale Road, Uxbridge, MA 01569-0367 USA  
copyright 2010 Berroco