

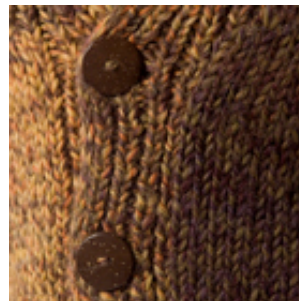
FREE
PATTERNS

Kyle Boy

knit in **Keltic™**
Skill level: Easy



KNIT



Kyle Boy is a shawl collared cardigan in our self striping Keltic yarn.

Shown in size 4



[PDF Pattern Instructions](#)

(If you can't open this PDF file you need Adobe Acrobat Reader. Get it [here](#).)

SIZES

Directions are for children's size 2. Changes for sizes 4, 6 and 8 are in parentheses.

FINISHED MEASUREMENTS

Chest – 24(26-28-30)"

Length – 15(16-17-18)"

MATERIALS

6(7-8-9) hanks [BERROCO KELTIC](#) (50 grs), #5863 Galloway

Straight knitting needles, sizes 8 and 10 OR SIZE TO OBTAIN GAUGE

Four ¾" buttons

GAUGE

16 sts = 4"; 20 rows = 4" in St st on size 10 needles

TO SAVE TIME, TAKE TIME TO CHECK GAUGE

WEB EXCLUSIVE
www.berroco.com

BACK

With smaller needles, cast on 61(65-69-73) sts.

Ribbing: Row 1 (RS): K1, * p1, k1, rep from * across.

Row 2: P1, * k1, p1, rep from * across. Rep these 2 rows until piece measures 1 1/2" from beg, end on RS. Change to larger needles and p the next row, dec 11 sts evenly spaced across – 50(54-58-62) sts. Work even in St st until piece measures 10(10 1/2-11-11 1/2)" from beg, end on WS. Mark beg and end of last row for beg of armholes. Work even until armholes measure 5(5 1/2-6-6 1/2)", end on WS. Bind off.

LEFT FRONT

With smaller needles, cast on 27(29-31-33) sts. Work in ribbing as for back for 1 1/2", end on RS. Change to larger needles and p the next row, dec 6 sts evenly spaced across – 21(23-25-27) sts. Work even in St st until piece measures 10(10 1/2-11-11 1/2)" from beg, end on WS. Mark end of last row for armhole.

Shape Neck: Dec Row (RS): K to last 2 sts, k2 tog. Rep this dec every RS row 15(13-12-11) times more, then every other RS row 0(2-3-4) times. Work even on 5(7-9-11) sts until armhole measures 5(5 1/2-6-6 1/2)", end on WS. Bind off.

RIGHT FRONT

Work to correspond to left front, reversing all shaping. Work neck decs as SSK, k to end.

SLEEVES

With smaller needles, cast on 33 sts. Work in ribbing as for back for 3", end on RS. Change to larger needles and p the next row, dec 5 sts evenly spaced across – 28 sts. Work in St st, inc 1 st each side every 1 1/4(1-3/4-3/4)" 6(8-10-12) times – 40(44-48-52) sts. Work even until sleeve measures 10(11-12-13)" from beg, end on WS. Bind off.

FINISHING

Right Frontband and Collar: With smaller needles, cast on 10 sts.

Row 1 (RS): Sl 1, (p1, k1) 4 times, p1.

Row 2: *K1,P1, rep from* across. Rep these 2 rows until band, when slightly stretched, measures 10(10 1/2-11-11 1/2)", end on WS. Mark end of last row for beg of collar.

Inc Row (RS): Work to last st, M1p, k1 – 11 sts. Inc 1 st 1 st in from same edge EVERY row 23 times more, working incs into ribbing – 34 sts. Inc 1 st 1 st in from same edge every RS row 0(4-4-4) times more – 34(38-38-38) sts. Work even until collar, when slightly stretched, measures 5(5 1/2-6-6 1/2)" above marker, end on RS.

Next Row (WS): Bind off 11 sts, work to end – 23(27-27-27) sts. Work even for 4 rows, end on WS.

Note: Short rows are worked to give shaping to the collar. When working these rows you will work part way across a row, turn, sl 1, then work back to the beginning.

Short Rows: Row 1 (RS): Work 19(23-23-23) sts in ribbing, turn, sl 1, then work to end. Work 4 rows even.

Row 2 (RS): Work 15(19-19-19) sts in ribbing, turn, sl 1, then work to end. Work 4

rows even. Continue in this manner to alternate short rows and even rows, working 4 less sts each short row until short side of collar measures 2 3/4" from bound-off sts, end on WS. Sl 23(27-27-27) sts onto holder. Mark placement of 4 buttons on placket, the first 1" up from cast-on edge, the last 1/2" below beg of collar and the other 2 evenly spaced between.

Left Frontband and Collar: With smaller needles, cast on 10 sts.

Row 1 (RS): P1, (k1, p1) 4 times, sl 1.

Row 2: P1, (k1, p1) 4 times, k1. Rep these 2 rows until piece measures 1", end on WS.

Buttonhole Row (RS): P1, (k1, p1) twice, yo, k2 tog, work to end. Continue to work in ribbing as established until band, when slightly stretched, measures 10(10 1/2-11-11 1/2)", making 3 more buttonholes opposite markers on right frontband, end on WS.

Mark beg of last row for beg of collar.

Inc Row (RS): K1, M1k, work to end – 11 sts. Inc 1 st 1 st in from same edge EVERY row 23 times more, working incs into ribbing – 34 sts. Inc 1 st 1 st in from same edge every RS row 0(4-4-4) times – 34(38-38-38) sts. Work even until collar, when slightly stretched, measures 5(5 1/2-6-6 1/2)" above marker, end on WS.

Next Row (RS): Bind off 11 sts, work to end – 23(27-27-27) sts. Work even for 3 rows, end on WS.

Short Rows: Row 1 (RS): Work 19(23-23-23) sts in ribbing, turn, sl 1, work to end. Work 4 rows even.

Row 2 (RS): Work 15(19-19-19) sts in ribbing, turn, sl 1, work to end. Work 4 rows even. Continue in this manner to alternate short rows and even rows, working 4 less sts each short row until short edge of collar measures 2 3/4" from bound-off sts, end on WS. Sl 23(27-27-27) sts onto holder. Sew shoulder seams. Sew inner edges of frontbands to front edges. Sew inner edges of collar to neck edge, sewing bound-off sts to back as a continuation of shoulder seams. Weave sts from holders tog at center back neck. Sew on sleeves between markers. Sew side and sleeve seams. Sew on buttons.

