

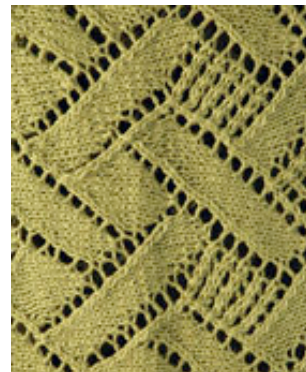
**FREE
PATTERNS**

Montsey

knit in **NaturLin™**
Skill level: **Intermediate**



KNIT



Montsey is a lacey shrug for spring and summer.



[PDF Pattern Instructions](#)

(If you can't open this PDF file you need Adobe Acrobat Reader. Get it [here.](#))

SIZE

Approximately 22" wide x 62" long

MATERIALS

10 Hanks [BERROCO NATURLIN](#) (50 grs), #6315 Coriander
29" Length circular knitting needle, size 6 (4.00 mm) OR SIZE TO OBTAIN
GAUGE
2 St markers

GAUGE

WEB EXCLUSIVE
www.berroco.com

18 sts = 4"; 32 rows = 4" in Pat St
24 sts = 4"; 32 rows = 4" in St st
TO SAVE TIME, TAKE TIME TO CHECK GAUGE

SHRUG

With circular needle, cast on 126 sts. DO NOT join.

Seed St: Row 1 (RS): * K1, p1, rep from * across.

Row 2: * P1, k1, rep from * across. Rep these 2 rows until piece measures 3" from beg, end on RS.

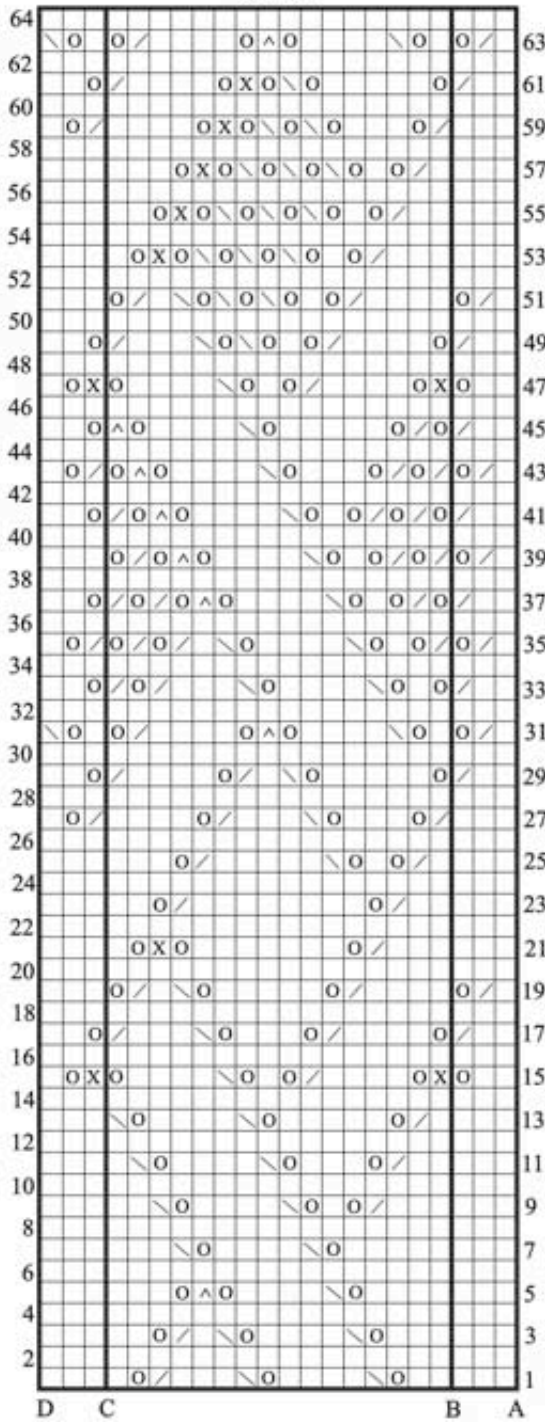
Dec Row (WS): Work in Seed St as established over 6 sts, place marker, p to last 6 sts decreasing 12 sts across, place marker, work in Seed St as established to end – 114 sts. Keeping 6 sts at each edge in Seed St as established and following chart over 102 sts between markers, work even until piece measures 59" from beg, end on RS.

Inc Row (WS): Work in Seed St to marker, drop marker, p to next marker, increasing 12 sts across, drop marker, work in Seed St to end – 126 sts. Work even in Seed St for 3". Bind off.

FINISHING

Steam piece with hot steam iron and a pressing cloth. Lay piece out flat with short ends at each side and WS facing up. Fold upper right corner down to lower side edge so that short end is even with side edge. Sew these edges tog from short end outward for 10", leaving remaining edges unsewn for armhole. Repeat on the other end of shrug.

CHART



HOW TO USE CHART

Beg at A, work to C, rep between B and C, end at D

KEY TO CHART

- K on RS, p on WS
- K2 tog
- SSK
- Yo
- K3 tog
- S1 1, k2 tog, pss0