



**fine handknitting yarns**

SEARCH

Go

[New This Season](#)

[Patterns](#)

[Yarns](#)

[Free KnitBits](#)

[Yarn Shops](#)

[Quick Links](#)

[Blog](#)

[Multimedia](#)



[FREE KnitBits](#)

[Berroco Blog](#)

[Email This Page](#)

Enter your email address

Subscribe

>> [Preview](#)

[RSS](#)

**FREE PATTERNS**

# Valpuri

knit in **Bling Bling™**  
Skill level: **Intermediate**

KNIT



[enlarge model](#)



[enlarge detail](#)

[Schematic](#) | [Chart](#) | [Stitch Glossary](#)

Yarn used ...



**Bling Bling**

Like this pattern? You may also like these patterns from our recent booklets . . .



WEB EXCLUSIVE  
[www.berroco.com](http://www.berroco.com)

Knit in an eye-appealing variety of cable stitches, Valpuri is a form fitting T with a split neckline and cap sleeves.



### PDF Pattern Instructions

(If you can't open this PDF file you need Adobe Acrobat Reader. Get it [here](#).)

Shown in size Small

### SIZES

Directions are for women's size X-Small. Changes for sizes Small, Medium, Large and X-Large are in

parentheses.

## FINISHED MEASUREMENTS

Bust – 32(36-40-44-48)“

Length – 21 1/2(21 1/2-22-22 1/2-23)“

## MATERIALS

8(8-10-11-12) Balls **BERROCO BLING BLING** (50 grs), #1544 Greige/Gold

Straight knitting needles, sizes 6 and 8 OR SIZE TO OBTAIN GAUGE

Cable needle (cn)

2 St markers

## GAUGES

17 sts = 4“; 24 rows = 4“ in St st on size 8 needles

62 sts = 10“; 24 rows = 4“ in charted pat

TO SAVE TIME, TAKE TIME TO CHECK GAUGE

## BACK

With smaller needles, cast on 82(90-98-106-114) **sts**.

**Ribbing: Row 1 (RS):** K2, \* p2, k2, **rep** from \* across.

**Row 2:** P2, \* k2, p2, rep from \* across. Rep these 2 rows until piece measures 2“ from **beg**, end on WS, **dec** 1(1-1-1-0) st at beg and end of last row – 80(88-96-104-114) sts. Change to larger needles.

**Establish Pat St: Row 1 (RS):** K9(13-17-21-26), place marker, work Row 1 of **Chart** over 62 sts, place marker, k to end.

**Row 2:** P to 1st marker, work Row 2 of **Chart** to next marker, p to end. Work even in pat as established until piece measures 4“ from beg, end on **WS**.

**Inc Row (RS):** K1, M1k, work to last st, M1k, k1 – 82(90-98-106-116) sts. Rep this **inc** every 3“ 3 times more – 88(96-104-112-122) sts. Work even until piece measures 14“ from beg, end on WS.

**Shape Raglan Armholes:** Bind off 3(3-4-7-10) sts at beg of the next 2 rows – 82(90-96-98-102) sts.

**Dec Row (RS):** K1, **SSK**, work to last 3 sts, k2 **tog**, k1 – 80(88-94-96-100) sts. Rep this dec every RS row 12(18-22-23-25) times more, then every other RS row 3(1-0-0-0) times, end on WS. Bind off remaining 50 sts for back neck.

## FRONT

Work same as back until piece measures 14“ from beg, end on WS – 88(96-104-112-122) sts.

**Shape Raglan Armholes:** Bind off 3(3-4-7-10) sts at beg of the next 2 rows – 82(90-96-98-102) sts.

**Note:** Please read through this next section before starting to knit.

**Divide for Neck Opening: Dec Row (RS):** K1, **SSK**, work to center point marked on **chart**, join another ball of yarn and work to last 3 sts, k2 **tog**, k1 – 40(44-47-48-50) sts each side. Working on both sides at once with separate balls of yarn, continue to dec 1 st at each armhole edge in this manner every RS row 12(18-22-23-25) times more, then every other RS row 3(1-0-0-0) times. **AT THE SAME TIME**, when armholes measure 4 1/2(4 1/2-5-5 1/2-6)“, before all decs have been completed, end on WS.

**Shape Neck:** Still working both sides at once and continuing to work armhole decs, bind off 12 sts at each

side of neck opening once, then dec 1 st at each neck edge EVERY row 12 times. When all neck and armhole decs have been completed, end on WS. Fasten off last st each side.

## SLEEVES

With smaller needles, cast on 62(62-66-70-74) sts. Work in ribbing same as back for 7 rows, end on RS. Change to larger needles.

**Inc Row (WS):** Work 7(7-9-11-13) sts, inc 10 sts across next 48 sts, work to end – 72(72-76-80-84) sts.

**Establish Pat St:** K7(7-9-11-13), work Row 1 of **chart** over 58 sts, k to end.

**Row 2:** P7(7-9-11-13), work Row 2 of **chart** of 58 sts, p to end. Work in pat as established. AT THE SAME TIME, shape cap as follows:

**Shape Raglan Cap:** Bind off 3(3-4-7-10) sts at beg of the next 2 rows – 66(66-68-66-64) sts.

**Dec Row 1 (RS):** K1, SSK, work to last 3 sts, k2 tog, k1 – 64(64-66-64-62) sts. Rep this dec every RS row 10(10-13-16-21) times more, end on WS – 44(44-40-32-20) sts. Work Dec Row 1 once more, end on RS – 42(42-38-30-18) sts..

**Dec Row 2 (WS):** P1, p2 tog, work to last 3 sts, p2 tog TBL, p1 – 40(40-36-28-16) sts. Rep Dec Row 1 and Dec Row 2 9(9-8-6-3) times more, end on WS. Bind off remaining 4 sts.

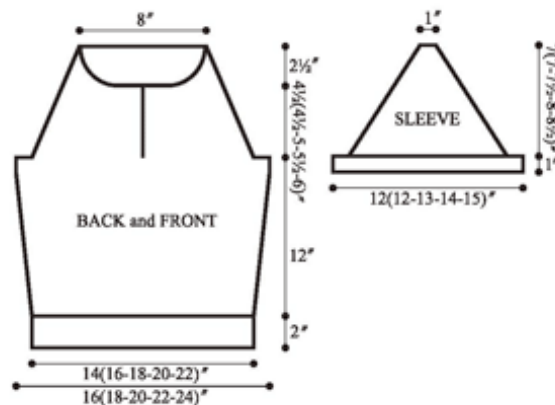
## FINISHING

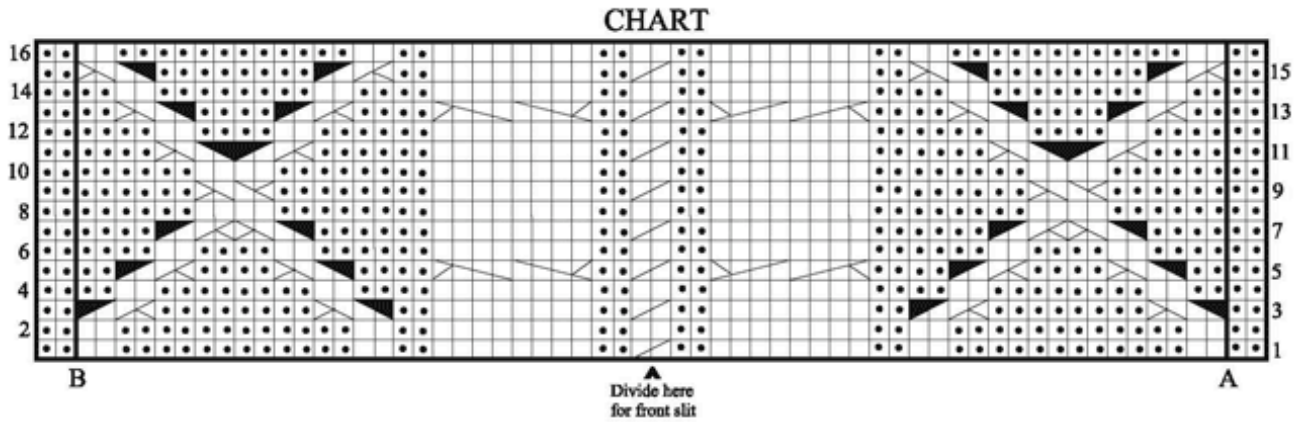
Sew raglan sleeve caps to raglan armholes.

**Neckband:** With RS facing, using smaller needles, beg at right front edge of neck opening, pick up and k12 sts across bound-off sts of neck, 16 sts along right neck edge, 4 sts across top of right sleeve, 42 sts across back neck edge, 4 sts across top of left sleeve, 16 sts along left neck edge, then 12 sts across bound-off sts of left neck – 106 sts.

**Row 1 (WS):** Sl 1, p1, \* k2, p2, rep from \* across.

**Row 2:** Sl 1, k1, \* p2, k2, rep from \* across. Rep these 2 rows once more, then rep Row 1 once more, end on WS. Bind off in ribbing. Sew side and sleeve seams.





### KEY TO CHART

- K on RS, p on WS
- P on RS, k on WS
- Skip 1 st, k the next st, k skipped st
- Sl 2 sts to cn and hold in BACK, k2, then p2 from cn
- Sl 2 sts to cn and hold in FRONT, p2 then k2 from cn
- Sl 2 sts to cn and hold in FRONT, k2, then k2 from cn
- Sl 4 sts to cn and hold in BACK, k4, then k4 from cn
- Sl 4 sts to cn and hold in FRONT, k4, then k4 from cn

### NOTE

For sleeves, work between A and B

[Home](#) | [Yarn Shops](#) | [Yarns](#) | [Free KnitBits®](#) | [New This Season](#) | [Free Patterns](#) | [Blog](#) | [Multimedia](#)  
[Pattern Corrections](#) | [Stitch Glossary](#) | [Links](#) | [Handeze® Glove](#) | [Scarf Central](#)  
[About Us](#) | [Privacy Statement](#) | [FAQs](#) | [Contact Us](#)

Berroco, Inc. P.O. Box 367, 14 Elmdale Road, Uxbridge, MA 01569-0367 USA  
copyright 2008 Berroco