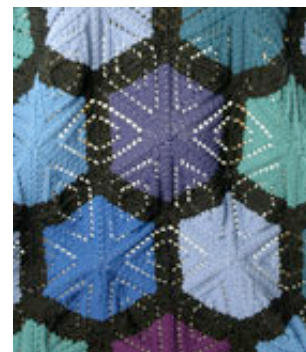


**FREE**  
**PATTERNS**

# Arabesque

knit in **Comfort™**  
Skill level: **Intermediate**



Arabesque is a hexagonal mosaic throw composed of color and pattern stitch, knit in Comfort.



[PDF Pattern Instructions](#)

(If you can't open this PDF file you need Adobe Acrobat Reader. Get it [here](#).)

## SIZE

Approximately 52" x 50"

## MATERIALS

**Colorway 1:** 5 Balls [BERROCO COMFORT](#) (100 grs), #9734 Licorice (MC), 2 balls #9726 Cornflower (A) and 1 ball each #9725 Dutch Teal (B), #9753 Agean Sea (C), #9735 Delft Blue (D), #9739 Grape Jelly (E), #9722 Purple (F) and #9736 Primary Blue (G)

**Colorway 2:** 5 Balls [BERROCO COMFORT](#) (100 grs), #9734 Licorice (MC), 2 balls #9756 Copen Blue (A) and 1 ball each #9741 Bittersweet (B), #9716 Chambray (C), #9727 Spanish Brown (D), #9720 Hummus (E), #9780 Dried Plum (F) and #9747 Cadet (G)

WEB EXCLUSIVE  
[www.berroco.com](http://www.berroco.com)

**Colorway 3:** 5 Balls [BERROCO COMFORT](#) (100 grs), #9734 Licorice (MC), 2 balls #9742 Pimpernel (A) and 1 ball each #9723 Rosebud (B), #9727 Spanish Brown (C), #9730 Teaberry (D), #9755 Wild Cherry (E), #9760 Beet Root (F) and #9745 Filbert (G)

**Colorway 4:** 5 Balls [BERROCO COMFORT](#) (100 grs), #9734 Licorice (MC), 2 balls #9752 Adirondack (A) and 1 ball each #9737 Aster (B), #9724 Pumpkin (C), #9722 Purple (D), #9753 Aegean Sea (E), #9743 Goldenrod (F) and #9740 Seedling (G)

**Colorway 5:** 5 Balls [BERROCO COMFORT](#) (100 grs), #9734 Licorice (MC), 2 balls #9762 Spruce (A) and 1 ball each #9730 Teaberry (B), #9744 Teal (C), #9760 Beet Root (D), #9747 Cadet (E), #9742 Pimpernel (F) and #9761 Lovage (G)

**Colorway 6:** 5 Balls [BERROCO COMFORT](#) (100 grs), #9734 Licorice (MC), 2 balls #9781 Olive (A) and 1 ball each #9717 Raspberry Coulis (B), #9753 Aegean Sea (C), #9721 Sprig (D), #9725 Dutch Teal (E), #9733 Turquoise (F) and #9724 Pumpkin (G)

**Colorway 7:** 5 balls [BERROCO COMFORT](#) (100 grs), #9734 Licorice (MC), 2 balls #9750 Primary Red (A) and 1 ball each #9722 Purple (B), #9736 Primary Blue (C), #9740 Seedling (D), #9732 Primary Yellow (E), #9731 Kidz Orange (F) and #9702 Pearl (G)

Straight knitting needles, size 7 (4.50 mm) OR SIZE TO OBTAIN GAUGE

Crochet hook, size 4.50 mm (G)

Tapestry needle

7 St markers

#### **GAUGE**

1 Hexagon measures 8 1/2" x 8 1/2" on straight needles

TO SAVE TIME, TAKE TIME TO CHECK GAUGE

#### **NOTE**

**Optional:** If desired, hexagons may be joined as you work. To do this, with RS facing, 25 sts should be picked up along the edge of each adjoining hexagon between markers. You must then cast on enough sts so that you always start Row 1 of your hexagon with 152 sts on your needles.

#### **HEXAGON 1**

With straight needles, using MC, cast on 152 sts.

**Row 1:** K1, place marker, \* work Row 1 of Chart over 25 sts, place marker, rep from \* 5 times more, k1 – 140 sts. Work in pat as established, keeping 1 st at beg and end in St st and working 6 repeats of Chart between markers. Carry markers up as you work. You will be decreasing 12 sts each row. When Row 5 has been completed, change to desired hexagon color shown on diagram and work with this color to end. When Row 25 has been completed, end on WS – 8 sts. Break off yarn leaving a 12" long end. Thread end into tapestry needle and draw through all sts on needle. Pull up tightly and secure. Sew seam, completing hexagon. Continue to make hexagons using colors shown on diagram.

**Note:** As each hexagon is finished, mark each corner of cast-on edge with a pin or short piece of yarn. This makes it easier to assure that all corners line up when assembling hexagons.

**FINISHING**

Sew hexagons together following diagram. Leave all corner markers on cast-on edges of outer hexagons in place.

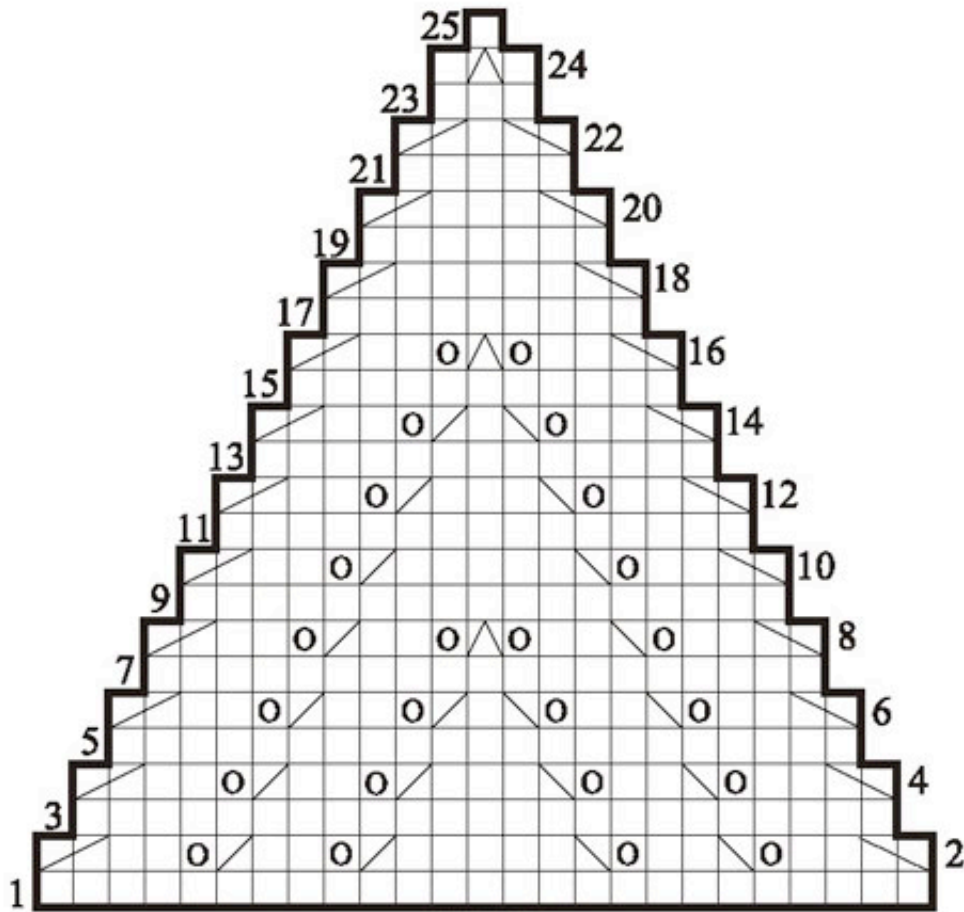
**Edging:** With RS facing, using crochet hook, join MC at point shown on diagram 1 st before corner marker.

**Rnd 1:** Ch 1, sc in joining st, \* skip corner marker, work 21 sc's evenly along side of hexagon to next corner marker, skip corner marker, [work 20 sc's along side of hexagon to 1 st before next corner marker, pull up a loop in st before and st after corner marker, yo and draw through all loops on hook (dec made), work 20 sc's along side of hexagon to next corner marker, skip corner marker] 3 times, rep from \* around entire throw, join with a sl st in first sc.

**Rnd 2:** Ch 1, sc in sl st, ch 3 (corner space), \* sc in each of the next 21 sc's, ch 3 (corner space), [sc in each of the next 19 sc's, skip dec made in Rnd 1, sc in next 20 sc's, ch 3 (corner space)] 3 times, rep from \* around, join with a sl st in first sc.

**Rnd 3:** Ch 1, sc in sl st, work 3 sc's in ch-3 space, \* sc in each sc to next ch-3 space, 3 sc's in ch-3 space, [1 sc in each sc to last sc of next side, skip last sc and next sc (inner corner), sc in each sc to next ch-3 space, work 3 sc's in ch-3 space] 3 times, rep from \* around, join with a sl st in first sc.

**Rnd 4:** Ch 1, sc in sl st and in each sc around, skipping 2 sc's at each inner corner as on Rnd 3. Join with a sl st in first sc. Fasten off.



CHART

**KEY TO CHART**

□ K on RS, p on WS

◻ Sl 1, k2 tog, pss0

◻ K2 tog

◻ SSK

◻ K2 tog, yo

◻ Yo, SSK

