

Agapanthas

Designed by the Berroco Design Team / Skill level: Intermediate



FINISHED MEASUREMENTS

Bust: (36, 41, 44) [48½, 52, 56½]
{60, 64½, 68} / (91.5, 104, 112) [123,
132, 143.5] {152.5, 164, 172.5} cm
Length: (23, 23½, 24) [24½, 25,
25½] {26, 26½, 27} / (58.5, 59.5, 61)
[62, 63.5, 65] {66, 67, 68.5} cm
Shown in size 36" / 91.5 cm.
Recommended ease: 2–4" /
5–10 cm positive ease

YARN

BERROCO REMIX LIGHT (100 grs):
(2, 2, 3) [3, 3, 4] {3, 4, 4} balls #6918
Rose

NEEDLES and NOTIONS

Knitting needles, sizes 3 / 3.25 mm
and 5 / 3.75 mm *or size to obtain
gauge*
16" / 40 cm circular needle, size 3 /
3.25 mm
2 stitch markers

GAUGE

22 sts and 32 rows = 4" / 10 cm in
St st on larger needles
*Gauge shown is after blocking.
To save time and ensure accurate
measurements, take time to check
gauge.*

Berroco Remix® Light

Find this Yarn 🔍



BERROCO®

Yarn for all makers™



www.berroco.com



We recommend using yarns called for in our instructions. Every effort has been made to ensure that directions contained in this book are accurate and complete, however errors do occur. We cannot be responsible for variance of individual knitters, human or typographical errors.

All pattern PDFs are updated when corrections are made. In the event of finding an error, please make sure you've downloaded the most recent version.

SPECIAL ABBREVIATIONS

K4tog: Knit 4 stitches together

Ssssk: Slip 4 stitches knitwise (individually), insert point of left hand needle through fronts of these 4 stitches and knit 4 together.

BACK

With larger needles, cast on (99, 113, 121) [133, 143, 155] {165, 177, 187} sts. Knit 6 rows (3 Garter ridges), end on WS. Change to St st and work even until piece measures 14½" / 37 cm from cast-on, end on WS.

Shape Raglan Armholes: Bind off (5, 6, 7) [7, 8, 8] {9, 9, 10} sts at beginning of the next 2 rows—(89, 101, 107) [119, 127, 139] {147, 159, 167} sts.

For Sizes 48½" / 123 cm, 52" / 132 cm, 56½" / 143.5 cm, 60" / 152.5 cm, 64½" / 164 cm, and 68" / 172.5 cm ONLY:
Dec Row 1 (RS): K2, k3tog, knit to the last 5 sts, SSSK, k2—4 sts dec'd.

Rep Dec Row 1 every RS row (X, X, X) [3, 5, 9] {11, 15, 17} times more, end on WS—(X, X, X) [103, 103, 99] {99, 95, 95} sts.

For ALL Sizes: Dec Row 2 (RS): K2, k2tog, knit to the last 4 sts, SSK, k2—2 sts dec'd.

Rep Dec Row 2 every RS row (17, 28, 31) [29, 29, 27] {27, 25, 25} times more, then every 4th row (5, 0, 0) [0, 0, 0] {0, 0, 0} times, end on WS—43 sts.

Bind off remaining 43 sts for back neck.



FRONT

Work as for back until armholes measure approximately (5½, 5¾, 6½) [7, 7½, 8] {8½, 9, 9½}" / (14, 14.5, 16.5) [18, 19, 20.5] {21.5, 23, 24} cm, end on WS. Mark center 23 sts on last row.

Shape Neck: Next Row (RS): K2, k2tog, knit to first marker, slip sts just worked onto holder for left side; join another ball of yarn and bind off center 23 sts, removing markers, knit to last 4 sts, SSK, k2.

Right Front: Next Row (WS): Purl to last 2 sts, p2tog—18 sts. Continue to work armhole decs as before. AT THE SAME TIME, dec 1 st at neck edge EVERY row 8 times more. When all decs have been completed, fasten off last stitch.

Left Front: With WS facing, slip left side stitches from holder to larger needle.

Next Row (WS): Join yarn and p2tog, then purl to end. Continue to work armhole decs as before. AT THE SAME TIME, dec 1 st at neck edge EVERY row 8 times more. When all decs have been completed, fasten off last stitch.

SLEEVES

Edging: With smaller straight needles, cast on (147, 147, 159) [159, 171, 171] {183, 183, 195} sts.

Row 1 (WS): K3, bind off 3 sts (there are now 4 sts on needle), k2, * bind off 3 sts, k2, rep from * across—(75, 75,

81) [81, 87, 87] {93, 93, 99} sts. Knit 2 rows, end on WS.

Change to larger needles.

Establish Chart: Row 1 (RS): Knit (31, 31, 34) [34, 37, 37] {40, 40, 43}, pm, work Row 1 of Chart over 13 sts, pm, knit to end.

Row 2: Purl to first marker, sm, work Row 2 of Chart to last marker, sm, purl to end. Work even in pattern as established until chart has been completed and sleeve measures 1½" / 4 cm from cast-on, end on WS—(69, 69, 75) [75, 81, 81] {87, 87, 93} sts.

Shape Raglan Cap: Bind off (5, 6, 7) [7, 8, 8] {9, 9, 10} sts at beginning of the next 2 rows—(59, 57, 61) [61, 65, 65] {69, 69, 73} sts. Work 2 rows in St st.

Dec Row (RS): K2, k2tog, knit to last 4 sts, SSK, k2—2 sts dec'd. Rep Dec Row every 4th row (5, 7, 8) [5, 10, 12] {12, 14, 14} times more, then every RS row (16, 13, 14) [17, 14, 12] {14, 12, 14} times, end on WS—15 sts. Bind off.

FINISHING

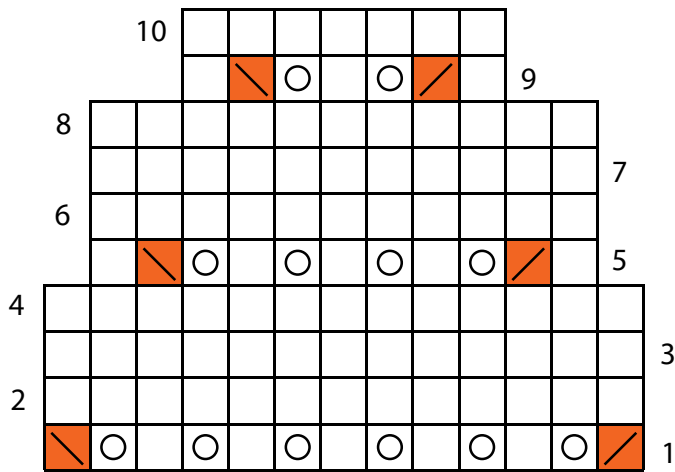
Sew raglan sleeve caps to raglan armholes. Sew side and sleeve seams.

Neckband: With RS facing, using circular needle, begin at left back raglan seam, pick up and knit 14 sts across top of left sleeve, 8 sts along left front neck edge, 23 sts across front neck edge, 8 sts along right front neck edge, 14 sts across top of right sleeve, then 42 sts across back neck edge—109 sts. Place marker and join for working in the round. Purl 1 round. Bind off knitwise.

Weave in all ends and block as desired.




AGAPANTHAS CHART



KEY TO CHART

 knit on RS; purl on WS

 yarn over

 k4tog

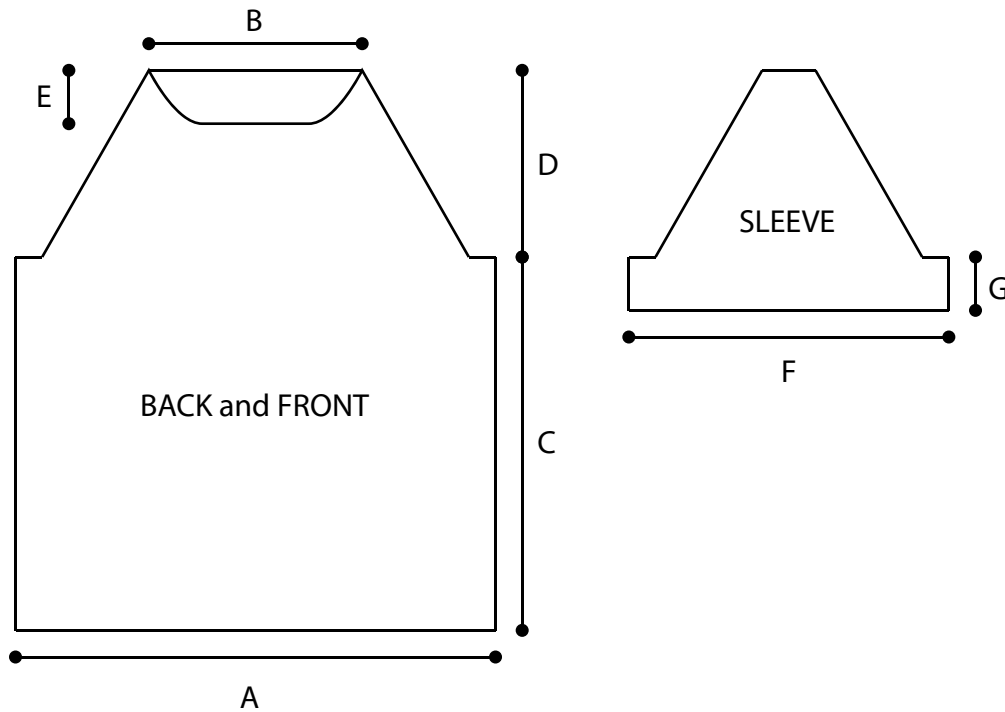
 sssk

CHART NOTES

On RS, work from right to left.

On WS, work from left to right.

AGAPANTHAS SCHEMATICS



AGAPANTHAS MEASUREMENTS

A (Back and Front Width): (18, 20½, 22) [24¼, 26, 28¼] {30, 32¼, 34}" / (45.5, 52, 56) [61.5, 66, 72] {76, 82, 86.5} cm

B (Neck Width): 7¾" / 19.5 cm

C (Length to Underarms): 14½" / 37 cm

D (Armhole Length): (7, 7¼, 8) [8½, 9, 9½] {10, 10½, 11}" / (18, 18.5, 20.5) [21.5, 23, 24] {25.5, 26.5, 28} cm

E (Front Neck Depth): 1½" / 4 cm

F (Sleeve Width at underarm): (13, 13, 14) [14, 15¼, 15¼] 16, 16, 17¼)" / (33, 33, 35.5) [35.5, 38.5, 38.5] {40.5, 40.5, 44} cm

G (Sleeve Length): 1½" / 4 cm



STANDARD ABBREVIATIONS & TERMS

beg: beginning
CC: contrasting color
CDD: Centered Double Decrease—Slip 2 together (as if to k2tog), knit 1, pass the 2 slipped stitches over
cn: cable needle
dec: decrease
dpn(s): double pointed needle(s)
end on WS: end having just completed a Wrong Side row.
end on RS: end having just completed a Right Side row
Garter St: Knit EVERY row when working back and forth in rows. Knit 1 round, purl 1 round when working in the round.
inc: increase
k: knit
k tbl: knit through the back loop(s)
k2tog: knit 2 stitches together
k3tog: knit 3 stitches together
kfb: knit in the front and back of the next st
LH: left hand
LLI: Left Lifted Increase—Insert LH needle into the purl bump one row below the st just worked on the RH needle and knit into this st (1 st inc'd)
M1: Make 1—Pick up horizontal strand between stitch just worked and next stitch from front to back, place on left hand needle, knit this stitch through the back (1 stitch increased).
M1L: Make 1 Left—Work as for M1.
M1p: Make 1 purl—Pick up horizontal strand between stitch just worked and next stitch from front to back, place on left hand needle, purl this stitch through the back (1 stitch increased).
M1pL: Make 1 purl Left—Work as for M1p.
M1pR: Make 1 purl Right—Pick up horizontal strand between stitch just worked and next stitch from back to front, place on left hand needle, purl this stitch through the front (1 stitch increased).
M1R: Make 1 Right—Pick up horizontal strand between stitch just worked and next stitch from back to front, place on left hand needle, knit this stitch through the front (1 stitch increased).
MC: main color
p: purl
p tbl: purl through the back loop(s)
p2tog: purl 2 stitches together
p3tog: purl 3 stitches together
pat(s): pattern(s)
pm: place marker
pss: pass slipped stitch over knit stitch
rep: repeat

Rev St st: Reverse Stockinette Stitch—Purl 1 row, knit 1 row alternately when working back and forth in rows. The purl side is the right side of the work. Purl EVERY round when working in the round.

RH: right hand

RLI: Right Lifted Increase—Insert RH needle into the purl bump of the next st on the LH needle and knit into this st (1 st inc'd)

rnd(s): round(s)

RS: right side

sl: slip

sm: slip marker

SSK: Slip 2 stitches knitwise, insert point of left hand needle through fronts of these 2 stitches and knit 2 together.

SSP: Slip 2 stitches knitwise, transfer these 2 stitches back to left hand needle, purl 2 together through the back loops.

SSSK: Slip 3 stitches knitwise, insert point of left hand needle through fronts of these 3 stitches and knit 3 together.

st(s): stitch(es)

St st: Stockinette Stitch—Knit 1 row, purl 1 row alternately when working back and forth in rows. The knit side is the right side of work. Knit EVERY round when working in the round.

tbl: through back loop(s)

w&t: wrap and turn, a method of concealing a hole created in short row shaping. On RS rows: With yarn held in front, slip next stitch purlwise, then bring yarn between needles to the back. Slip that same stitch back to the left needle. Turn your work. On WS Rows: With yarn held in back, slip next stitch purlwise, then bring yarn between needles to the front. Slip that same stitch back to the left needle. Turn your work. Unless otherwise indicated, each time you come to a wrapped stitch when working subsequent rows, slip the wrap back over stitch and onto needle, then work the wrap together with its accompanying stitch.

WS: wrong side

wyib: with yarn in back

wyif: with yarn in front

yo: yarn over

QUESTIONS?

Scan the QR code for the Berroco Learning Center where you will find our fit guide, how-to videos, the complete glossary and more.

