

Freshwater

Designed by Alison Green / Skill level: Intermediate



FINISHED MEASUREMENTS
Approximately 18" around x 8½"
high

YARN
BERROCO ULTRA ALPACA LIGHT
(50 grs): 2 hanks #42114 Tea Rose

NEEDLES and NOTIONS
16" circular needles, sizes 3
(3.25 mm) and 5 (3.75 mm) or size
to obtain gauge
1 set double-pointed needles, size
5 (3.75 mm)
1 stitch marker
Tapestry needle

GAUGE
30 sts and 36 rnds = 4" in charted
pattern on larger needle after
blocking
*To save time and ensure accurate
measurements, take time to check
gauge.*

Berroco Ultra® Alpaca Light

Find this Yarn 

BERROCO®



www.berroco.com

We recommend using yarns called for in our instructions. Every effort has been made to ensure that directions contained in this book are accurate and complete, however errors do occur. We cannot be responsible for variance of individual knitters, human or typographical errors.

All pattern PDFs are updated when corrections are made. In the event of finding an error, please make sure you've downloaded the most recent version.

SPECIAL ABBREVIATIONS

LT (Left Twist): Skip 1 stitch, knit the next stitch tbl, then knit skipped stitch.

HAT

With smaller circular needle, cast on 90 sts. Place marker and join for working in the round.

Set Up Rib: Rnd 1: * K1tbl, p1, rep from * around. Rep this round until piece measures 1¾" from beginning. Change to larger circular needle.

Inc Rnd 1: * K1tbl, p1, yo, k3, yo, p1, rep from * around—120 sts.

Next Rnd: * K1tbl, p1, k5, p1, rep from * around.

Inc Rnd 2: * K1tbl, p1, k1, yo, k1, k2tog, yo, k1, p1, rep from * around—135 sts.

Begin working from chart. Work Rnds 1–13 of chart twice, then rep Rnds 1–12 of chart once more.

Shape Crown: Note: When there are too few sts to fit comfortably on circular needle, change to dpns, dividing sts onto 3 needles.

Rnd 1 (Dec Rnd): * K1tbl, p1, SSK, k2, k2tog, p1, rep from * around—105 sts.

Rnd 2: * K1tbl, p1, k4, p1, rep from * around.

Rnd 3: * K1tbl, p1, yo, SSK, k2tog, yo, p1, rep from * around.

Rnd 4: Rep Rnd 2.

Rnd 5: * K1tbl, p1, k1, LT, k1, p1, rep from * around.

Rnds 6 and 7: Rep Rnd 2.

Rnd 8 (Dec Rnd): * K1tbl, p1, SSK, k2tog, p1, rep from * around—75 sts.

Rnd 9: * K1tbl, p1, k2, p1, rep from * around.

Rnd 10: * K1tbl, p1, LT, p1, rep from * around.

Rnds 11 and 12: Rep Rnd 9.

Rnd 13: * K1tbl, p1, yo, SSK, p1, rep from * around.

Rnd 14 (Dec Rnd): * K2tog-tbl, k1, SSK, rep from * around—45 sts.

Rnds 15 and 16: * K1tbl, k2, rep from * around.

Rnd 17 (Dec Rnd): * K2tog-tbl, k1, rep from * around—30 sts.

Rnd 18: * K1tbl, k1, rep from * around.

Rnd 19 (Dec Rnd): [K2tog-tbl] 15 times—15 sts.



Rnd 20 (Dec Rnd): [K2tog-tbl] 7 times, k1tbl—8 sts.

Break off yarn leaving an 8" long end. Thread end through tapestry needle and draw through all sts. Pull up tightly and secure, then fasten off.

FINISHING

Weave in all ends and block as desired.

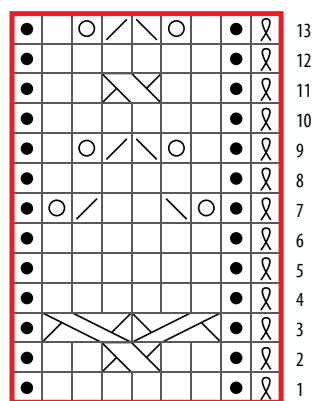


CHART NOTES

Work from right to left on eve rnd.

CHART KEY

- knit
- purl
- k1tbl
- yarn over
- k2tog
- SSK
- sl 1 to cn and hold to FRONT, k1, k1 from cn
- sl 2 to cn and hold to BACK, k1, k2 from cn
- sl 1 to cn and hold to FRONT, k2, k1 from cn
- pattern repeat

STANDARD ABBREVIATIONS & TERMS

beg: beginning

CC: contrasting color

CDD: Centered Double Decrease—Slip 2 together (as if to k2tog), knit 1, pass the 2 slipped stitches over

cn: cable needle

dec: decrease

dpn(s): double pointed needle(s)

end on WS: end having just completed a Wrong Side row.

end on RS: end having just completed a Right Side row

Garter St: Knit EVERY row when working back and forth in rows. Knit 1 round, purl 1 round when working in the round.

inc: increase

k: knit

k tbl: knit through the back loop(s)

k2tog: knit 2 stitches together

k3tog: knit 3 stitches together

kfb: knit in the front and back of the next st

LH: left hand

LLI: Left Lifted Increase—Insert LH needle into the purl bump one row below the st just worked on the RH needle and knit into this st (1 st inc'd)

M1: Make 1—Pick up horizontal strand between stitch just worked and next stitch from front to back, place on left hand needle, knit this stitch through the back (1 stitch increased).

M1L: Make 1 Left—Work as for M1.

M1p: Make 1 purl—Pick up horizontal strand between stitch just worked and next stitch from front to back, place on left hand needle, purl this stitch through the back (1 stitch increased).

M1pL: Make 1 purl Left—Work as for M1p.

M1pR: Make 1 purl Right—Pick up horizontal strand between stitch just worked and next stitch from back to front, place on left hand needle, purl this stitch through the front (1 stitch increased).

M1R: Make 1 Right—Pick up horizontal strand between stitch just worked and next stitch from back to front, place on left hand needle, knit this stitch through the front (1 stitch increased).

MC: main color

p: purl

p tbl: purl through the back loop(s)

p2tog: purl 2 stitches together

p3tog: purl 3 stitches together

pat(s): pattern(s)

pm: place marker

pssso: pass slipped stitch over knit stitch

rep: repeat

Rev St st: Reverse Stockinette Stitch—Purl 1 row, knit 1 row alternately when working back and forth in rows. The purl side is the right side of the work. Purl EVERY round when working in the round.

RH: right hand

RLI: Right Lifted Increase—Insert RH needle into the purl bump of the next st on the LH needle and knit into this st (1 st inc'd)

rnd(s): round(s)

RS: right side

sl: slip

sm: slip marker

SSK: Slip 2 stitches knitwise, insert point of left hand needle through fronts of these 2 stitches and knit 2 together.

SSP: Slip 2 stitches knitwise, transfer these 2 stitches back to left hand needle, purl 2 together through the back loops.

SSSK: Slip 3 stitches knitwise, insert point of left hand needle through fronts of these 3 stitches and knit 3 together.

st(s): stitch(es)

St st: Stockinette Stitch—Knit 1 row, purl 1 row alternately when working back and forth in rows. The knit side is the right side of work. Knit EVERY round when working in the round.

tbl: through back loop(s)

w&t: wrap and turn, a method of concealing a hole created in short row shaping. On RS rows: With yarn held in front, slip next stitch purlwise, then bring yarn between needles to the back. Slip that same stitch back to the left needle. Turn your work. On WS Rows: With yarn held in back, slip next stitch purlwise, then bring yarn between needles to the front. Slip that same stitch back to the left needle. Turn your work. Unless otherwise indicated, each time you come to a wrapped stitch when working subsequent rows, slip the wrap back over stitch and onto needle, then work the wrap together with its accompanying stitch.

WS: wrong side

wyib: with yarn in back

wyif: with yarn in front

yo: yarn over

Love Berroco patterns?
Sign up for our **KnitBits®** newsletter.

