

Mallow

version 4

Designed by the Berroco Design Team / Skill level: Intermediate / Shown in size 40"



FINISHED MEASUREMENTS

Bust (closed) – 36 (40, 44, 48, 52, 56, 60, 64)"

Length – 26 (26, 26½, 26½, 27, 27, 27½, 27½)"

note: This can be worn with anywhere from 0 to 6" of positive ease. Please take this into consideration when selecting your size. The fronts of this garment are not intended to meet. There will be approximately 2" open between the front edges.

YARN

7 (8, 9, 10, 11, 12, 13, 14) balls

[BERROCO LINEN STONEWASH](#) (50 grs), #7370 Basalt

Originally shown in: [BERROCO MAYA](#) (50 grs), #5635 Tierra

NEEDLES AND NOTIONS

Knitting needles, size 8 (5.00 mm) or size to obtain gauge

36" circular knitting needle, size 8 (5.00 mm)

2 st markers

GAUGE

20 sts and 28 rows = 4" in St st

To save time and ensure accurate measurements, take time to check gauge.

[Berroco](#)
[Linen Stonewash™](#)

Find this Yarn 



BERROCO®



www.berroco.com

We recommend using yarns called for in our instructions. Every effort has been made to ensure that directions contained in this book are accurate and complete, however errors do occur. We cannot be responsible for variance of individual knitters, human or typographical errors.

All pattern PDFs are updated when corrections are made. In the event of finding an error, please make sure you've downloaded the most recent version.

NOTE

When working the chart, if you have worked a double yo on the previous row, when working the next purl row, purl the first yo and knit the second.

BACK

With straight needles, cast on 91 (101, 111, 121, 131, 141, 151, 161) sts. Work even in St st for 9½ (9½, 10, 10, 10½, 10½, 11, 11)", end on WS.

Establish Chart: Row 1 (RS): K1 (6, 11, 16, 21, 26, 31, 36), place marker, work Row 1 of chart over 89 sts, place marker, knit to end.

Row 2: Purl to first marker, work Row 2 of chart to last marker, purl to end. Work even in pattern as established until piece measures 20 (19½, 19½, 19, 19, 18½, 18½, 18)" from beginning, end on WS. Mark beginning and end of last row for beginning of armholes. Work even until armholes measure approximately 6 (6½, 7, 7½, 8, 8½, 9, 9½)", end on WS with Row 116 of chart. Bind off. Mark center 6" on bound-off edge for back neck.

LEFT FRONT

With straight needles, cast on 30 (35, 40, 45, 50, 55, 60, 65) sts. Work even in St st for 20 (19½, 19½, 19, 19, 18½, 18½, 18)", end on WS. Mark end of last row for beginning of armhole. Work even until armhole measures 6 (6½, 7, 7½, 8, 8½, 9, 9½)", end on WS. Bind off.

RIGHT FRONT

Work same as left front until piece measures 20 (19½, 19½, 19, 19, 18½, 18½, 18)", end on WS. Mark beginning of last row for beginning of armhole. Complete same as left front. Sew shoulder seams.

SLEEVES

With RS facing, pick up and knit 61 (65, 71, 75, 81, 85, 91, 95) sts along armhole edge between markers. Beg with a purl row, work even in St st for 1", end on WS.

Dec Row (RS): K1, k2tog, knit to last 3 sts, SSK, k1 —2 sts dec'd. Rep this dec every 16th, 12th, 9th, 8th, 6th, 4th, 4th,



4th row 7 (9, 12, 14, 17, 19, 22, 24) times more—45 sts.
Work even until sleeve measures 18" from beginning, end on WS. Bind off.

FINISHING

Sew side and sleeve seams.

Collar: With RS facing, using circular needle, begin at lower right front edge, pick up and knit 118 (118, 120, 120, 122, 122, 124, 124) sts along right front edge, 27 sts across back neck edge, then 118 (118, 120, 120, 122, 122, 124, 124) sts along left front edge—263 (263, 267, 267, 271, 271, 275, 275) sts.

Row 1 (WS): Purl.

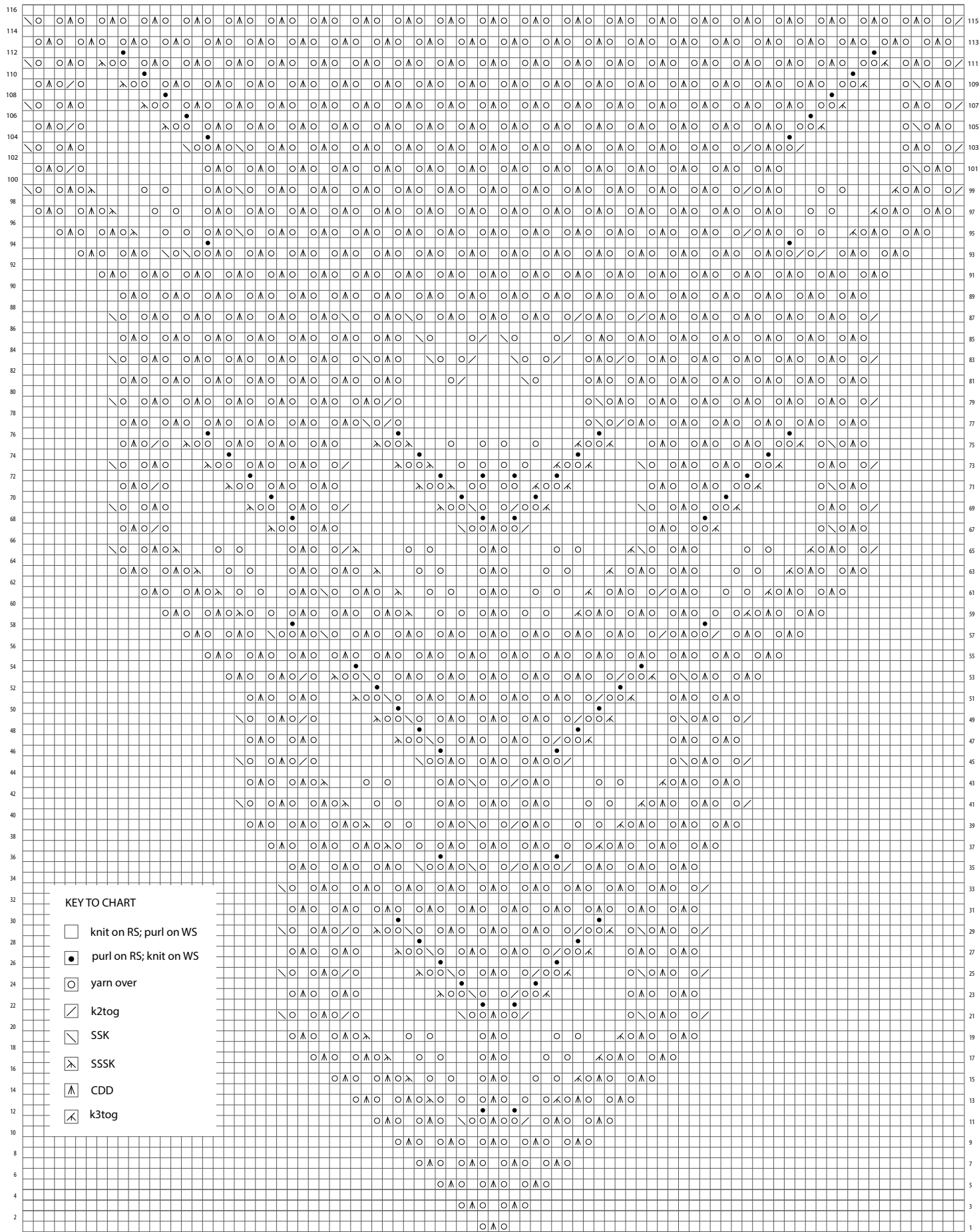
Row 2 (RS): K2, * yo, CDD, yo, k1, rep from * to last st, end k1.

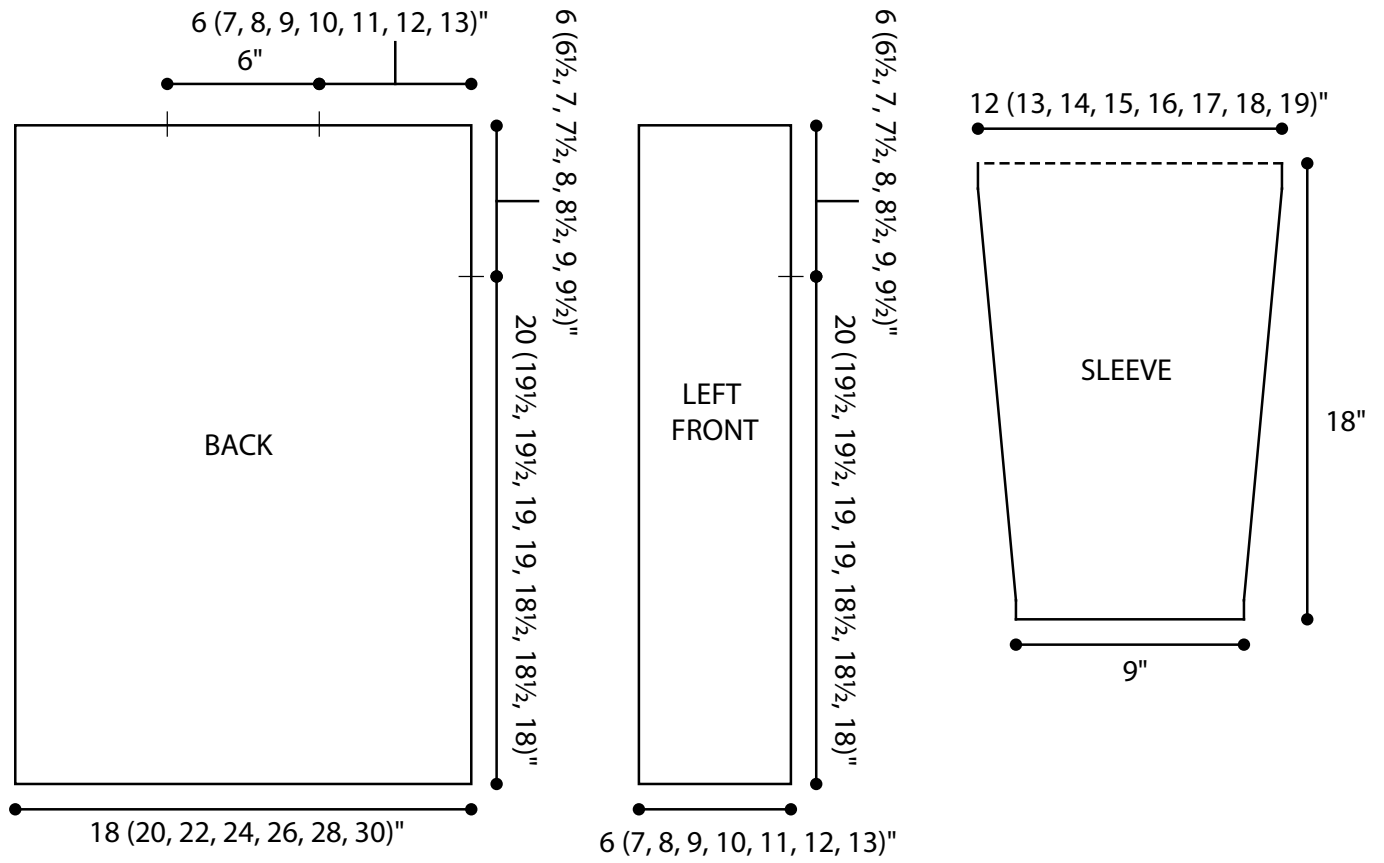
Row 3: Purl.

Row 4: K1, k2 tog, yo, k1, * yo, CDD, yo, k1, rep from * to last 3 sts, end yo, SSK, k1.

Rep these 4 rows until collar measures 2" from beginning, end on WS. Bind off purlwise on RS.







STANDARD ABBREVIATIONS & TERMS

beg: beginning

CC: contrasting color

CDD: Centered Double Decrease—Slip 2 together (as if to k2tog), knit 1, pass the 2 slipped stitches over

cn: cable needle

dec: decrease

dpn(s): double pointed needle(s)

end on WS: end having just completed a Wrong Side row.

end on RS: end having just completed a Right Side row

Garter St: Knit EVERY row when working back and forth in rows. Knit 1 round, purl 1 round when working in the round.

inc: increase

k: knit

k tbl: knit through the back loop(s)

k2tog: knit 2 stitches together

k3tog: knit 3 stitches together

kfb: knit in the front and back of the next st

LH: left hand

LLI: Left Lifted Increase—Insert LH needle into the purl bump one row below the st just worked on the RH needle and knit into this st (1 st inc'd)

M1: Make 1—Pick up horizontal strand between stitch just worked and next stitch from front to back, place on left hand needle, knit this stitch through the back (1 stitch increased).

M1L: Make 1 Left—Work as for M1.

M1p: Make 1 purl—Pick up horizontal strand between stitch just worked and next stitch from front to back, place on left hand needle, purl this stitch through the back (1 stitch increased).

M1pL: Make 1 purl Left—Work as for M1p.

M1pR: Make 1 purl Right—Pick up horizontal strand between stitch just worked and next stitch from back to front, place on left hand needle, purl this stitch through the front (1 stitch increased).

M1R: Make 1 Right—Pick up horizontal strand between stitch just worked and next stitch from back to front, place on left hand needle, knit this stitch through the front (1 stitch increased).

MC: main color

p: purl

p tbl: purl through the back loop(s)

p2tog: purl 2 stitches together

p3tog: purl 3 stitches together

pat(s): pattern(s)

pm: place marker

psso: pass slipped stitch over knit stitch

rep: repeat

Rev St st: Reverse Stockinette Stitch—Purl 1 row, knit 1 row alternately when working back and forth in rows. The purl side is the right side of the work. Purl EVERY round when working in the round.

RH: right hand

RLI: Right Lifted Increase—Insert RH needle into the purl bump of the next st on the LH needle and knit into this st (1 st inc'd)

rnd(s): round(s)

RS: right side

sl: slip

sm: slip marker

SSK: Slip 2 stitches knitwise, insert point of left hand needle through fronts of these 2 stitches and knit 2 together.

SSP: Slip 2 stitches knitwise, transfer these 2 stitches back to left hand needle, purl 2 together through the back loops.

SSSK: Slip 3 stitches knitwise, insert point of left hand needle through fronts of these 3 stitches and knit 3 together.

st(s): stitch(es)

St st: Stockinette Stitch—Knit 1 row, purl 1 row alternately when working back and forth in rows. The knit side is the right side of work. Knit EVERY round when working in the round.

tbl: through back loop(s)

w&t: wrap and turn, a method of concealing a hole created in short row shaping. On RS rows: With yarn held in front, slip next stitch purlwise, then bring yarn between needles to the back. Slip that same stitch back to the left needle. Turn your work. On WS Rows: With yarn held in back, slip next stitch purlwise, then bring yarn between needles to the front. Slip that same stitch back to the left needle. Turn your work. Unless otherwise indicated, each time you come to a wrapped stitch when working subsequent rows, slip the wrap back over stitch and onto needle, then work the wrap together with its accompanying stitch.

WS: wrong side

wyib: with yarn in back

wyif: with yarn in front

yo: yarn over

Love Berroco patterns?
Sign up for our **KnitBits®** newsletter.

