

Berroco Modern Cotton™



Skill level: Easy
One size

FINISHED MEASUREMENTS

Approximately 24" wide x 36" long

MATERIALS

3 Hanks *BERROCO MODERN COTTON* (100 grs),
#1626 Mackeral
29" Length circular knitting needle, size 7 (4.50
mm) OR SIZE TO OBTAIN GAUGE

GAUGE

17 sts = 4"; 26 rows = 4" in Lace Pat
TO SAVE TIME, TAKE TIME TO CHECK GAUGE

LACE PATTERN (Multiple of 8 sts + 1)

Row 1 and all WS rows: Purl.

Row 2: K1, * yo, k2, sl 1, k2 tog, pssso, k2, yo, k1, rep from * across.

Row 4: K1, * k1, yo, k1, sl 1, k2 tog, pssso, k1, yo, k2, rep from * across.

Row 6: K1, * k2, yo, sl 1, k2 tog, pssso, yo, k3, rep from * across.

Row 8: K2 tog, * k2, yo, k1, yo, k2, sl 1, k2 tog, pssso, rep from * across, end last rep SSK instead of sl 1, k2 tog, pssso.

Row 10: K2 tog, * k1, yo, k3, yo, k1, sl 1, k2 tog, pssso, rep from * across, end last rep SSK instead of sl 1, k2 tog, pssso.

Row 12: K2 tog, * yo, k5, yo, sl 1, k2 tog, pssso, rep from * across, end last rep SSK instead of sl 1, k2 tog, pssso.

Rep these 12 rows for Lace Pat.

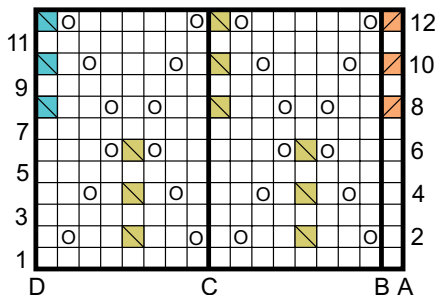
BLANKET

Cast on 103 sts. Knit 4 rows. Keeping 3 sts at each edge in Garter St and remaining sts in Lace Pat, work even until piece measures 35¼" from beg, end on RS. Knit 4 rows. Bind off.

Scan QR Code
Learn more about
Berroco Modern
Cotton™



SAUREY CHART



KEY TO CHART

□ K on RS, p on WS

○ Yo

■ SI 1, k2 tog, pss0

■ K2 tog

■ SSK

HOW TO USE CHART

On WS rows, beg at D,
work to B, rep between
C and B, end at A.

On RS rows, beg at A,
work to C, rep between
B and C to last 8 sts,
then work from C to D.

For more **free patterns**, subscribe to Berroco's free
e-newsletter **KnitBits®** at www.berroco.com



Don't forget to connect with us on social media!



Photo and text copyright © 2013, Berroco, Inc.