

agnes

Love Berroco patterns? Sign up for our [KnitBits® newsletter](#).

Skill level: Intermediate
One size

finished measurements
approximately 10½" wide x 10" long,
including edging

materials
1 hank [BERROCO INDIGO](#) (100 grs),
#6407 Faded

24" circular knitting needle, size 7 (4.50
mm) OR SIZE TO OBTAIN GAUGE
Tapestry needle

gauge
19 sts and 28 rows = 4" in stockinette st
TO SAVE TIME, TAKE TIME TO CHECK
GAUGE

Free Pattern



Berroco Indigo™



Find this yarn at your LYS

Our supercharged store locator goes above and beyond the ordinary. Innovatively linked to our inventory system, search for a yarn in your area and you'll pinpoint LYS's that have a proven history of ordering that product. A handy listing of all of the Berroco yarns the store carries and easy access to driving directions are also right at your finger tips. [Find all yarns now.](#)



Don't forget to connect with us on social media!



NOTE: We recommend using yarns called for in our instructions. Every effort has been made to ensure that directions contained in this book are accurate and complete, however errors do occur. We cannot be responsible for variance of individual knitters, human or typographical errors.

All pattern PDFs are updated when corrections are made. In the event of finding an error, please make sure you've downloaded the most recent version.

WASHCLOTH

Using a provisional cast on method, cast on 42 sts. Work 3 rows in stockinette st, beginning and ending with a WS row. Work chart rows 1-61. Work 4 rows in stockinette st, ending with a RS row.

With RS still facing, pick up and knit 42 sts along left edge of the piece. Carefully unpick provisional cast on and knit across these sts. Pick up and knit 42 sts along the last edge of the washcloth. Break yarn.

EDGING

Using a provisional cast on method, cast on 4 sts.
Note: for all k2tog's at end of edging rows, you are using 1 st from edging and 1 st from washcloth.

Row 1 (RS): K1, SSK, k2tog.

Row 2 and all WS rows: Sl 1, purl to end.

Row 3: K1, M1, k1, k2tog.

Row 5: K1, M1, k2, k2tog.

Row 7: K1, M1, k3, k2tog.

Row 9: K1, SSK, k2, k2tog.

Row 11: K1, SSK, k1, k2tog.

Rep Rows 1-12 until all sts around washcloth have been worked. Graft sts from end of edging to sts provisionally cast on.



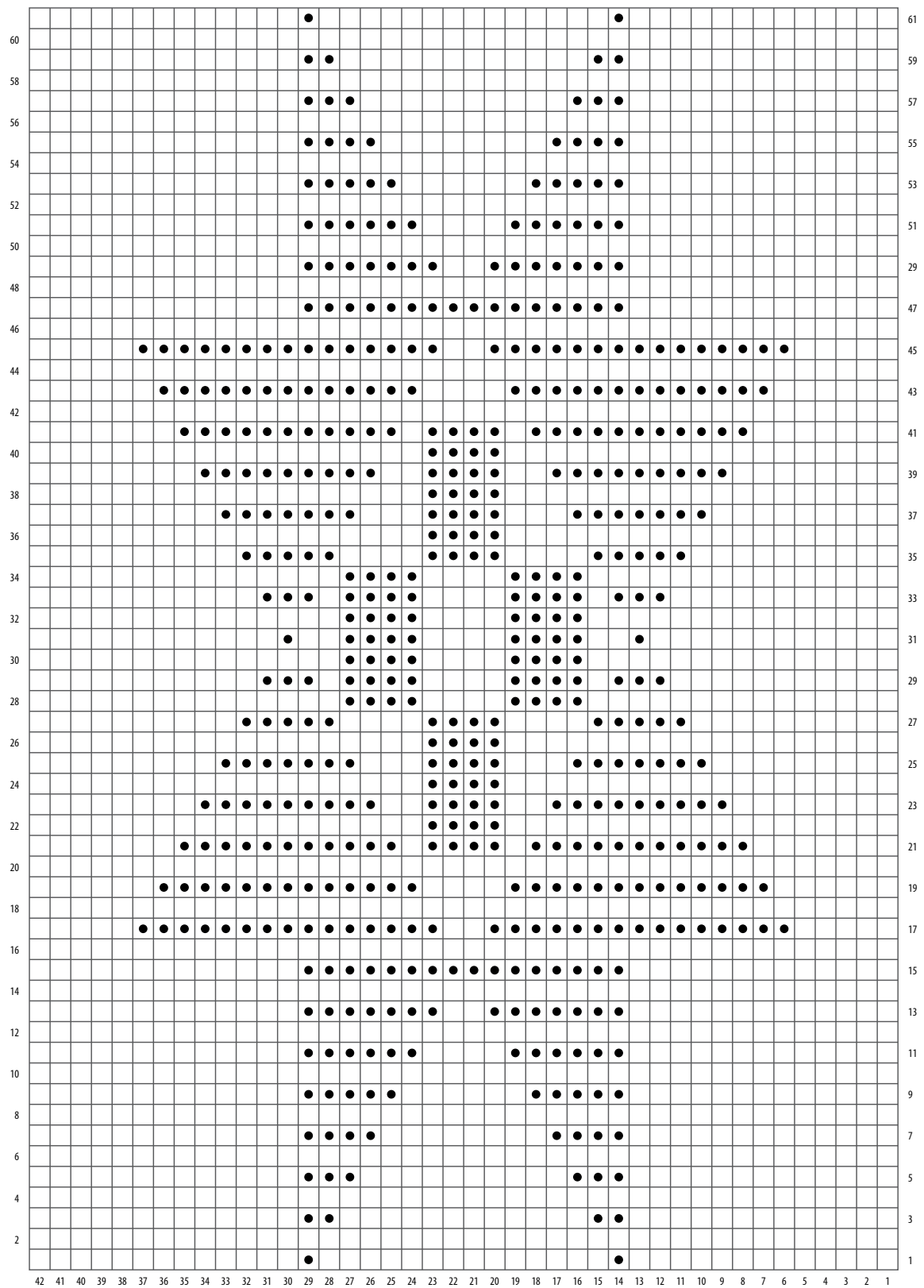


CHART KEY

- knit on RS; purl on WS
- purl on RS; knit on WS

ABBREVIATIONS & TERMS

Knit

beg: beginning

CC: contrasting color

cdd (centered double decrease): Slip 2 together, knit 1, pass the 2 slipped stitches over.

cn: cable needle

cont: continue

dec: decrease

dpn: double pointed needles

est: established

inc: increase

K: knit

k tbl: knit through the back loop(s)

k2tog: Knit 2 stitches together

k3tog: Knit 3 stitches together

LH: left hand

MC: main color

M1: Pick up horizontal strand between stitch just worked and next stitch from front to back, place on left hand needle, knit this stitch through the back (1 stitch increased).

M1L: Work as for M1.

M1p: Pick up horizontal strand between stitch just worked and next stitch from front to back, place on left hand needle, purl this stitch through the back (1 stitch increased).

M1pL: Work as for M1p.

M1pR: Pick up horizontal strand between stitch just worked and next stitch from back to front, place on left hand needle, purl this stitch through the front (1 stitch increased).

M1R: Pick up horizontal strand between stitch just worked and next stitch from back to front, place on left hand needle, knit this stitch through the front (1 stitch increased).

p: purl

p tbl: purl through the back loop(s)

pat(s): pattern(s)

pm: place marker

pssso: pass slip stitch over knit stitch

p2tog: purl 2 stitches together

p2sso: pass 2 slip stitches over knit stitch

p3tog: purl 3 stitches together

rem: remaining

rep: repeat

RH: right hand

rnd(s): round(s)

RS: right side

sl: slip

sm: slip marker

SSK: Slip 2 stitches knitwise, insert point of left hand needle through fronts of these 2 stitches and knit 2 together.

SSP: Slip 2 stitches knitwise, transfer these 2 stitches back to left hand needle, purl 2 together through the back loops.

st(s): stitch(es)

TBL: through back loop(s)

tog: together

WS: wrong side

wyib: with yarn in back

wyif: with yarn in front

yo: yarn over

end on WS: end having just completed a Wrong Side row.

end on RS: end having just completed a Right Side row

STOCKINETTE ST (St st): Knit 1 row, purl 1 row alternately when working on straight needles. The knit side is the right side of work. Knit EVERY round when working in the round on a circular needle.

Reverse St st (Rev St st): Purl 1 row, knit 1 row alternately when working on straight needles. The purl side is the right side of the work. Purl EVERY round when working in the round on a circular needle.

GARTER ST: Knit EVERY row when working on straight needles. Knit 1 round, purl 1 round when working on a circular needle.

Crochet

ch: chain

dc: double crochet

hdc: half double crochet

sc: single crochet

sl st: slip stitch

sp: space

tr: treble