

# Minutia '18

Designed by the Berroco Design Team



- 1 Reindeer Sweater**
- 2 White Tree Sweater**
- 3 Wreath Sweater**
- 4 Christmas Tree Sweater**

Berroco Ultra® Wool DK

Find this Yarn 

Berroco Vintage® DK

Find this Yarn 

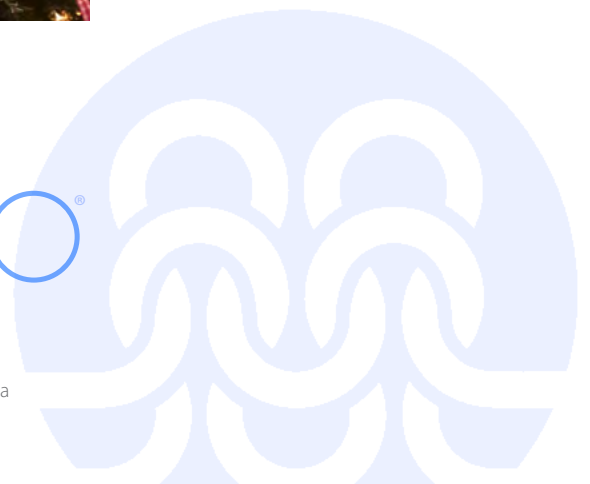
Berroco Ultra® Alpaca

Find this Yarn 

# BERROCO®



[www.berroco.com](http://www.berroco.com)



We recommend using yarns called for in our instructions. Every effort has been made to ensure that directions contained in this book are accurate and complete, however errors do occur. We cannot be responsible for variance of individual knitters, human or typographical errors.

All pattern PDFs are updated when corrections are made. In the event of finding an error, please make sure you've downloaded the most recent version.



## 1 REINDEER SWEATER

Designed by Brenda York | Skill level: Intermediate

### FINISHED MEASUREMENTS

Approximately 8" wide from cuff to cuff x 3¾" high

### YARN

**BERROCO ULTRA WOOL DK** (100 grs): small amount each #8301 Cream (MC), #8350 Chili (C1), #83103 Wheat (C2), #83115 Bear (C3), and #83149 Pine (C4)

### NEEDLES and NOTIONS

Knitting needles, size 6 (4.00 mm) or size to obtain gauge

Crochet hook, size 4.00 mm (G)

One ½" red pom-pom for nose

Twelve ¼" jingle bells

Tapestry needle

Sewing needle and thread

### GAUGE

23 sts and 30 rows = 4" in St st

To save time and ensure accurate measurements, take time to check gauge.

### NOTE

Body of sweater is made in one piece, starting at lower front edge and ending at lower back edge. Stitches for sleeves are picked up and worked down. When working chart, do not carry yarn across more than 3 stitches without twisting colors together on WS to prevent long floats.

### BODY

**Front:** With C1, cast on 19 sts. Knit 1 row on WS. Join MC and work in St st, following chart, until Row 26 has been completed, end on WS. Work from here with MC only.

**Divide for Neck: Next Row (RS):** K6, bind off 7 sts, k6.

**Next Row (WS):** P6, cast on 7 sts, k6—19 sts.

**Back:** Work even in St st with MC for 26 rows, end on WS. Change to C1 and purl 1 row. Bind off purlwise on WS. Measure down 1¼" from neck on each side of back and front and mark for armholes.

### SLEEVES

**Stripe Sequence:** Work in St st, alternating 2 rows C1 and 2 rows C2.

With RS facing, using C1, pick up and knit 15 sts between armhole markers.

With C1, purl 1 row. Join C4 and work 2 rows St st.

**Dec Row (RS):** K1, k2tog, knit to the last 3 sts, SSK, k1—2 sts dec'd. With C1, purl 1 row. Continuing to follow Stripe Sequence, rep Dec Row every 4th row twice more—9 sts.

Work even until 20 rows have been completed, end on RS.

With C1, purl 1 row on RS, then bind off purlwise on WS.

### FINISHING

**Neck Edging:** With RS facing, using crochet hook, join C1 at either shoulder. Work in sc around entire neck edge, join with a sl st in beg sc. Fasten off.

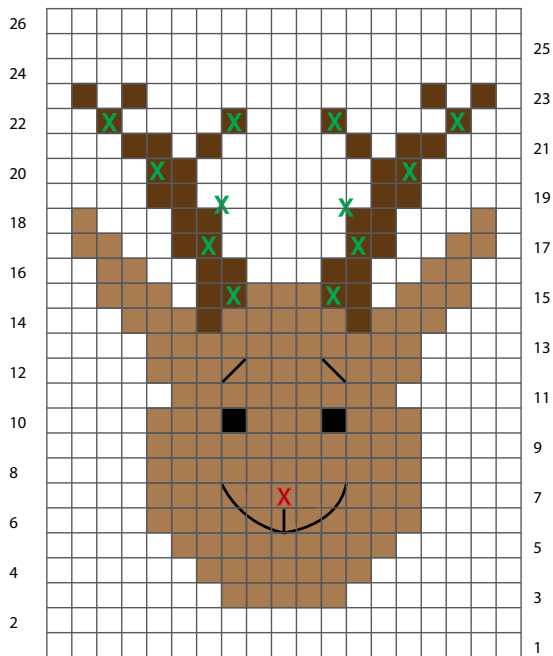
**Note:** Follow placement of embroidery and added notions shown on chart.

Sew red pom-pom to face for nose. With C3 threaded into tapestry needle, embroider eyes, eyebrows and mouth.

Sew jingle bells to antlers with sewing needle and thread.

Sew side and sleeve seams. Weave in all ends and block as desired.

REINDEER CHART



KEY TO CHART

- #8301 (MC)
- #83103 (C2)
- #83115 (C3)
- #8350 (C1)
- X Sew Pompom
- #83115 (C3) duplicate stitch
- X Sew jinglebells

CHART NOTES

Work from right to left on RS and from left to right on WS. Work eyebrows and mouth with C3 using backstitch.



**2 WHITE TREE SWEATER**

Designed by Brenda York | Skill level: Intermediate

FINISHED MEASUREMENTS

Approximately 8" wide from cuff to cuff x 3¾" high

YARN

**BERROCO ULTRA WOOL DK** (100 grs): small amount each #8361 Kale (MC) and #8301 Cream (CC)

NEEDLES and NOTIONS

Knitting needles, size 6 (4.00 mm) or size to obtain gauge  
 Crochet hook, size 4.00 mm (G)  
 Twelve ¼" jewelry charms  
 Sewing needle and thread

GAUGE

23 sts and 30 rows = 4" in St st

To save time and ensure accurate measurements, take time to check gauge.

NOTE

Body of sweater is made in one piece, starting at lower front edge and ending at lower back edge. Stitches for sleeves are picked up and worked down.

BODY

**Front:** With CC, cast on 19 sts. Knit 1 row on WS. Join MC and work in St st, following Body Chart, until Row 26 has been completed, end on WS. Work from here with MC only.

**Divide for Neck: Next Row (RS):** K6, bind off 7 sts, k6.

**Next Row (WS):** P6, cast on 7 sts, k6—19 sts.

**Back:** Work even in St st with MC for 26 rows, end on WS. Change to CC and purl 1 row. Bind off purlwise on WS. Measure down 1¼" from neck on each side of back and front and mark for armholes.

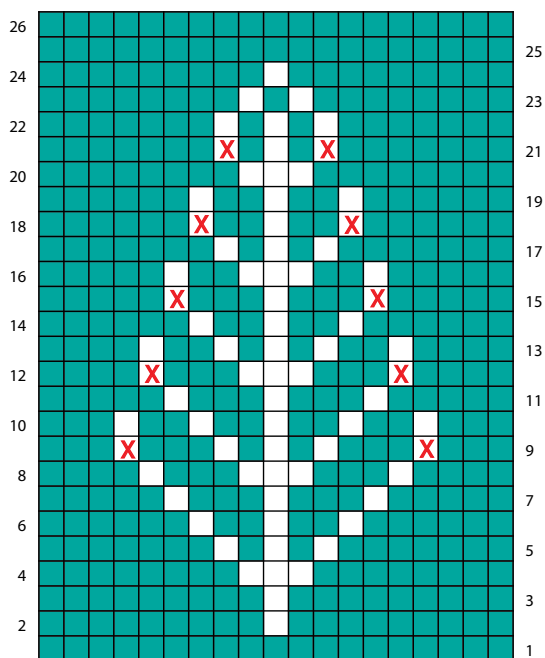
SLEEVES

With RS facing, using MC, pick up and knit 15 sts between armhole markers.



Beginning with Row 2, follow Sleeve Chart until 20 rows have been completed. Purl 1 row on RS, then bind off purlwise on WS.

WHITE TREE BODY CHART

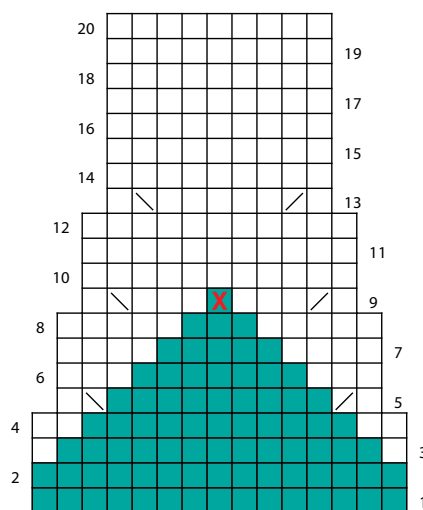


### FINISHING

**Neck Edging:** With RS facing, using crochet hook, join MC at either shoulder. Work in sc around entire neck edge, join with a sl st in beg sc. Fasten off.

Following placement shown on chart, sew charms to tree with needle and thread. Sew side and sleeve seams. Weave in all ends and block as desired.

WHITE TREE SLEEVE CHART



KEY TO CHART

- #8361 (MC)
- #8301 (CC)
- k2tog
- SSK
- Sew on charms

CHART NOTES

Work from right to left on RS rows and from left to right on WS rows.



### 3 WREATH SWEATER

Designed by Alison Green | Skill level: Intermediate

#### FINISHED MEASUREMENTS

Approximately 7½" across from cuff to cuff x 3¾" high

#### YARN

**BERROCO VINTAGE DK** (100 grs): small amount each #2150 Berries (C1), #2145 Cast Iron (C2), #2135 Holly (C3), and #2100 Snow Day (C4)

#### NEEDLES and NOTIONS

1 set double-pointed needles (or preferred needles

for knitting small circumferences in the round), size 6 (4.00 mm) or size to obtain gauge

Stitch marker

Waste yarn or spare dpns, size 6 (4.00 mm) or smaller to hold body stitches

Optional: small amount of a thicker red yarn for bow

Optional: small bells or other decoration for wreath

#### GAUGE

22 sts and 28 rnds = 4" in St st

To save time and ensure accurate measurements, take time to check gauge.

#### NOTE

When carrying yarn across more than 5 sts, be sure to twist yarns on WS to prevent long floats.

#### BODY

With C1, cast on 30 sts. Place marker and join for working in the round. Work in k1, p1 ribbing for 2 rounds. Change to C2 and St st and work 2 rounds. Join C3 and work from chart. When Rnds 1-13 of chart have been completed, break of C3 and work 2 more rounds in St st with C2. Break off yarn and place stitches on holder, waste yarn or spare dpn.

## FIRST SLEEVE

With C3, cast on 10 sts. Place marker and join for working in the round. Work in k1, p1 ribbing for 2 rounds. Break off C3 and join C1. Working in St st, work 2 rounds in C1. Join C4, \* work 2 rounds in C4, work 2 round in C1. Repeat from \* 4 times more. Break off yarns and place stitches on holder, waste yarn of spare dpn.

## SECOND SLEEVE

Work as for first sleeve until sleeve has been completed. Do not break off yarns, leaving stitches on needles.

## YOKE

**Joining Rnd:** With C4, knit across 10 sts of the second sleeve on needle, k15 stitches of body, knit across 10 sts of the first sleeve, then knit remaining 15 body stitches—50 sts. Place marker and join for working in the round.

**Dec Rnd 1:** \* K2, k2tog, rep from \* to last 2 sts, k2—38 sts. Join C1 and knit 2 rounds. Knit 1 round C4.

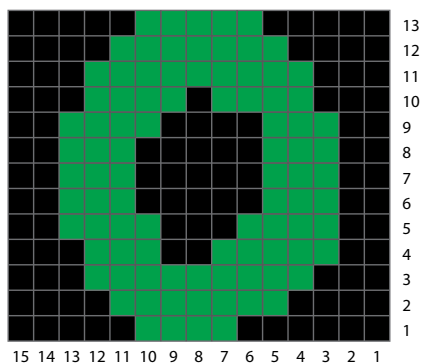
**Dec Rnd 2:** \* K1, k2tog, rep from \* to last 2 sts, k2—26 sts. Knit 1 round C1.

**Next Rnd (Bind off and Dec):** P2tog, \* p1, pssso (bind off), p2tog, pssso (bind off), rep from \* until all stitches have been bound off. Fasten off.

## FINISHING

Weave in ends. Using two strands of C1 (or a single strand of a thicker red yarn), make two small bows and sew to wreaths on back and front of body. Sew bells or other decorations onto the wreaths.

WREATH CHART



### CHART KEY

- knit with C2
- knit with C3

### CHART NOTES

Work from right to left on every rnd, working chart twice on each round.



## 4 CHRISTMAS TREE SWEATER

Designed by Donna Yacino | Skill level: Intermediate

### FINISHED MEASUREMENTS

Approximately 5½" across at widest point x 5" high

### YARN

**BERROCO ULTRA ALPACA** (100 grs): small amount #6275 Pea Soup Mix

Note: For a smaller sweater, use Ultra Alpaca Light #4275 Pea Soup Mix

### NEEDLES and NOTIONS

1 set double-pointed needles, size 7 (4.50 mm) or size to obtain gauge

5 stitch markers, 1 a different color for beg-of-rnd

Six 1" Plastic light bulbs

3/8" colored jingle bells, and small silver beads

### GAUGE

21 sts and 27 rows = 4" in St st

To save time and ensure accurate measurements, take time to check gauge.

### NOTE

This sweater is worked in one piece from the neck down.

### BODY

**Yoke:** Cast on 20 sts, divide evenly on 3 dpns, place different colored marker and join for working in the round.

Purl 1 round, knit 1 round, purl 1 round.

**Inc Rnd:** \* K2, M1, rep from \* around—30 sts. Redistribute stitches so that there are 10 sts on each dpn and the beg-of-rnd marker is in the center back.

**Next Rnd:** K7, pm, k1, pm, k14, pm, k1, pm, knit to end.

**First Tier and Armhole: Set-Up Rnd:** [Knit to marker, sm, M1, k1, M1, sm] twice, knit to end—34 sts.

**Next Rnd:** [Knit to marker, sm, M1, knit to marker, M1, sm] twice, knit to end—4 sts inc'd.

Repeat the last round twice more—46 sts (9 sts between markers).

**Next Rnd:** [Knit to marker, sm, bind off 8 sts, sm (1 st left between markers)] twice, knit to end—30 sts.

Knit 1 round, slipping markers.

**Second Tier:** Work as for first tier until there are 15 sts between markers. Knit the next round, binding off 14 sts (1 st left between markers).

**Third Tier:** Work as for first tier until there are 19 sts between markers. Knit the next round, binding off 18 sts and removing markers.

[Knit 1 round, purl 1 round] twice. Bind off knitwise.

## FINISHING

Sew the bound-off stitches together on the second and third tiers, closing the openings. Leave the first tier open for armholes.

Turn sweater inside out, weave in all ends and block as desired.

Sew on the lights, bells, and beads as in photo.

## STANDARD ABBREVIATIONS & TERMS

**beg:** beginning

**cn:** cable needle

**dec:** decrease

**dpn(s):** double pointed needle(s)

**end on WS:** end having just completed a Wrong Side row.

**end on RS:** end having just completed a Right Side row

**inc:** increase

**k:** knit

**k2tog:** knit 2 stitches together

**k3tog:** knit 3 stitches together

**M1L:** Make 1—Pick up horizontal strand between stitch just worked and next stitch from front to back, place on left hand needle, knit this stitch through the back (1 stitch increased).

**M1pL:** Make 1 purl—Pick up horizontal strand between stitch just worked and next stitch from front to back, place on left hand needle, purl this stitch through the back (1 stitch increased).

**M1pR:** Make 1 purl Right—Pick up horizontal strand between stitch just worked and next stitch from back to front, place on left hand needle, purl this stitch through the front (1 stitch increased).

**M1R:** Make 1 Right—Pick up horizontal strand between stitch just worked and next stitch from back to front, place on left hand needle, knit this stitch through the front (1 stitch increased).

**p:** purl

**p2tog:** purl 2 stitches together

**p3tog:** purl 3 stitches together

**pm:** place marker

**pssso:** pass slipped stitch over knit stitch

**rep:** repeat

**Rev St st:** Reverse Stockinette Stitch—Purl 1 row, knit 1 row alternately when working back and forth in rows. The purl side is the right side of the work. Purl EVERY round when working in the round.

**rnd(s):** round(s)

**RS:** right side

**sl:** slip

**sm:** slip marker

**SSK:** Slip 2 stitches knitwise, insert point of left hand needle through fronts of these 2 stitches and knit 2 together.

**SSP:** Slip 2 stitches knitwise, transfer these 2 stitches back to left hand needle, purl 2 together through the back loops.

**SSSK:** Slip 3 stitches knitwise, insert point of left hand needle through fronts of these 3 stitches and knit 3 together.

**st(s):** stitch(es)

**St st:** Stockinette Stitch—Knit 1 row, purl 1 row alternately when working back and forth in rows. The knit side is the right side of work. Knit EVERY round when working in the round.

**WS:** wrong side

**wyib:** with yarn in back

**wyif:** with yarn in front

**yo:** yarn over

Love Berroco patterns?  
Sign up for our **KnitBits®** newsletter.

