

Penelope

version 2

Designed by the Berroco Design Team



skill level: Intermediate

One size

finished measurements

Approximately 16" wide x 66" around
(after blocking)

materials

BERROCO ULTRA WOOL DK (100 grs),
2 balls #8301 Cream (MC) and 1 ball
each #83122 Sunflower (C1) and
#83153 Heather (C2)

needles and notions

Knitting needles, size 6 (4.00 mm)
or size to obtain gauge

gauge

22 sts and 29 rows = 4" in Charted
Pattern

*To save time and ensure accurate
measurements, take time to check
gauge.*

[Berroco Ultra® Wool DK](#)

[Find this Yarn](#) 



BERROCO®

www.berroco.com



NOTE: We recommend using yarns called for in our instructions. Every effort has been made to ensure that directions contained in this book are accurate and complete, however errors do occur. We cannot be responsible for variance of individual knitters, human or typographical errors.

All pattern PDFs are updated when corrections are made. In the event of finding an error, please make sure you've downloaded the most recent version.

COWL

With MC, cast on 89 sts. Work from chart or written instructions below.

Row 1 (WS): With MC, knit.

Row 2 (RS): With C1, knit.

Row 3: With C1, purl.

Row 4: With C2, purl.

Row 5: With C2, knit.

Rows 6, 8, and 10: With MC, k1, * yo, k1, yo, [SSK] twice, [k2tog] twice, [yo, k1] twice, rep from * to end.

Rows 7 and 9: With MC, purl.

Row 11: With MC, knit.

Row 12: With C2, knit.

Row 13: With C2, purl.

Row 14: With C1, purl.

Row 15: With C1, knit.

Rows 16–20: Rep Rows 6–10.

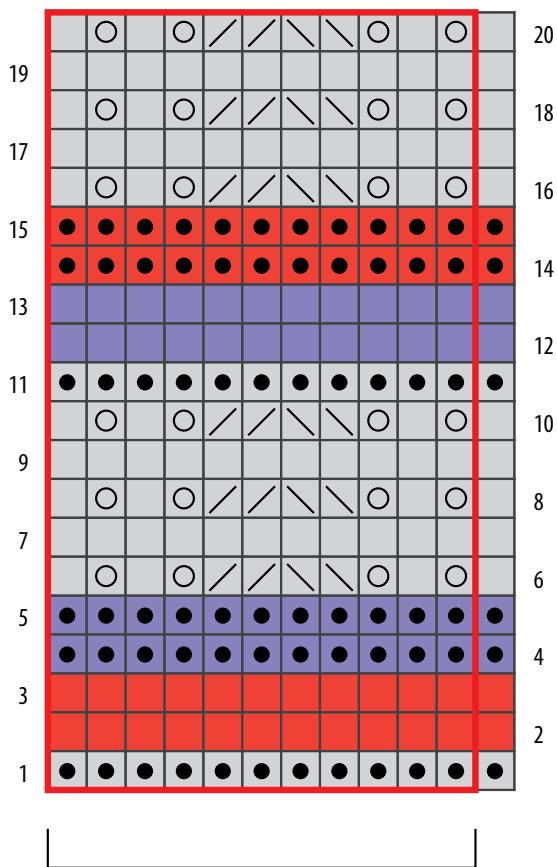
Work Rows 1–20 a total of 20 times, end on RS with Row 20. Bind off purlwise on WS.

FINISHING

Sew cast-on and bound-off edges together, being careful not to twist piece. Weave in all ends and block as desired to desired measurements.



PENELOPE CHART



11-stitch pattern repeat

KEY TO CHART

- MC
- C1
- C2
- knit on RS; purl on WS
- purl on RS; knit on WS
- yarn over
- / k2tog
- \ SSK
- pattern repeat

CHART NOTES

Work from right to left on RS rows and from left to right on WS rows. Chart begins on a WS row.

STANDARD ABBREVIATIONS & TERMS

beg: beginning
CC: contrasting color
CDD: Centered Double Decrease—Slip 2 together (as if to k2tog), knit 1, pass the 2 slipped stitches over
cn: cable needle
dec: decrease
dpn(s): double pointed needle(s)
end on WS: end having just completed a Wrong Side row.
end on RS: end having just completed a Right Side row
Garner St: Knit EVERY row when working back and forth in rows. Knit 1 round, purl 1 round when working in the round.
inc: increase
k: knit
k tbl: knit through the back loop(s)
k2tog: knit 2 stitches together
k3tog: knit 3 stitches together
kfb: knit in the front and back of the next st
LH: left hand
LLI: Left Lifted Increase—Insert LH needle into the purl bump one row below the st just worked on the RH needle and knit into this st (1 st inc'd)
M1: Make 1—Pick up horizontal strand between stitch just worked and next stitch from front to back, place on left hand needle, knit this stitch through the back (1 stitch increased).
M1L: Make 1 Left—Work as for M1.
M1p: Make 1 purl—Pick up horizontal strand between stitch just worked and next stitch from front to back, place on left hand needle, purl this stitch through the back (1 stitch increased).
M1pL: Make 1 purl Left—Work as for M1p.
M1pR: Make 1 purl Right—Pick up horizontal strand between stitch just worked and next stitch from back to front, place on left hand needle, purl this stitch through the front (1 stitch increased).
M1R: Make 1 Right—Pick up horizontal strand between stitch just worked and next stitch from back to front, place on left hand needle, knit this stitch through the front (1 stitch increased).
MC: main color
p: purl
p tbl: purl through the back loop(s)
p2tog: purl 2 stitches together

p3tog: purl 3 stitches together
pat(s): pattern(s)
pm: place marker
pss: pass slipped stitch over knit stitch
rep: repeat
Rev St st: Reverse Stockinette Stitch—Purl 1 row, knit 1 row alternately when working back and forth in rows. The purl side is the right side of the work. Purl EVERY round when working in the round.
RH: right hand
RLI: Right Lifted Increase—Insert RH needle into the purl bump of the next st on the LH needle and knit into this st (1 st inc'd)
rnd(s): round(s)
RS: right side
sl: slip
sm: slip marker
SSK: Slip 2 stitches knitwise, insert point of left hand needle through fronts of these 2 stitches and knit 2 together.
SSP: Slip 2 stitches knitwise, transfer these 2 stitches back to left hand needle, purl 2 together through the back loops.
SSSK: Slip 3 stitches knitwise, insert point of left hand needle through fronts of these 3 stitches and knit 3 together.
st(s): stitch(es)
St st: Stockinette Stitch—Knit 1 row, purl 1 row alternately when working back and forth in rows. The knit side is the right side of work. Knit EVERY round when working in the round.
tbl: through back loop(s)
w&t: wrap and turn, a method of concealing a hole created in short row shaping. *On RS rows:* With yarn held in front, slip next stitch purlwise, then bring yarn between needles to the back. Slip that same stitch back to the left needle. Turn your work. *On WS Rows:* With yarn held in back, slip next stitch purlwise, then bring yarn between needles to the front. Slip that same stitch back to the left needle. Turn your work. Unless otherwise indicated, each time you come to a wrapped stitch when working subsequent rows, slip the wrap back over stitch and onto needle, then work the wrap together with its accompanying stitch.
WS: wrong side
wyib: with yarn in back
wyif: with yarn in front
yo: yarn over

Love Berroco patterns?
 Sign up for our **KnitBits®** newsletter.

