



[click to enlarge](#)



[click to enlarge](#)



[click to enlarge](#)

[Chart](#) | [Abbreviations & Terms](#)



Vintage

[Find this Yarn](#)



The front portion of this square pillow cover is adorned with Xs and Os, while the back features a 3-button flap for easy removal.



### [PDF Pattern Instructions](#)

(If you can't open this PDF file you need Adobe Acrobat Reader. Get it [here](#).)

### One size

### FINISHED MEASUREMENTS

Approximately 16" square

### MATERIALS

2 Hanks **BERROCO VINTAGE** (100 grs), #5107 Cracked Pepper (MC) and 1 hank #5150 Berries (CC)

Straight knitting needles, size 7 (4.50 mm) OR SIZE TO OBTAIN GAUGE

Three 1" buttons

16" Square pillow form

### GAUGE

20 sts = 4"; 22 riws = 4" in St st following chart

18 sts = 4"; 24 rows = 4" in St st

TO SAVE TIME, TAKE TIME TO CHECK GAUGE

## NOTE

Pillow is worked all in one piece. When changing colors on chart, hold yarn to the left and pick up new color from underneath. This twists yarn so there are no holes.

## PILLOW

With MC, cast on 74 sts.

**Ribbing: Row 1 (RS):** K2, \* p2, k2, rep from \* across.

**Row 2:** P2, \* k2, p2, rep from \* across. Rep these 2 rows until piece measures 1½" from beg, end on WS. Work even in St st until piece measures 11½" from beg, end on WS. Mark beg and end of last row.

**Inc Row (RS):** K2, \* k7, M1k, rep from \* 8 times more, k to end – 83 sts. Beg with a p row, work even in St st for 5 rows, end on WS. Join CC.

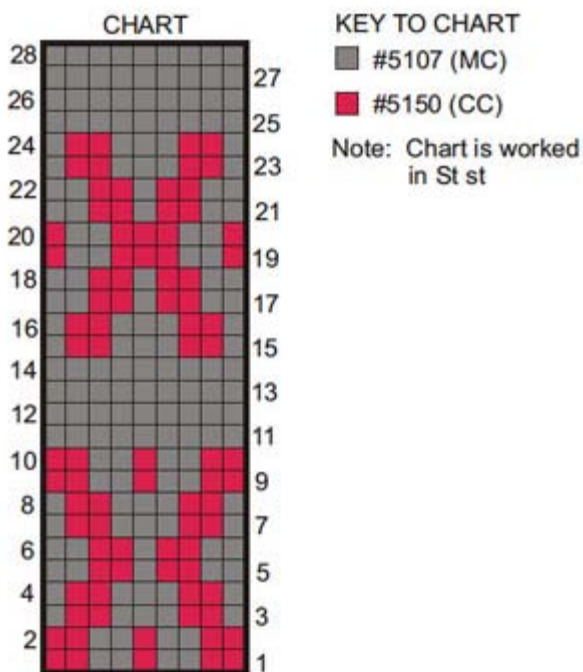
**Establish Chart: Row 1 (RS):** With MC, k1, work Row 1 of chart to last st, with MC, k1. Work even in pat as established until 3 repeats (84 rows) of chart have been completed, end on WS. Fasten off CC and work with MC only from here. Work 2 rows even, end on WS. Mark beg and end of last row.

**Dec Row (RS):** K2, \* k5, k2 tog, rep from \* 8 times more, k to end – 74 sts. Work even in St st until piece measures 5" above last set of markers, end on WS. Work even in ribbing same as at beg for 4 rows, end on WS.

**Buttonhole Row (RS):** (K2, p2) twice, yo, k2 tog, work in ribbing until there are 36 sts on RH needle, yo, k2 tog, work in ribbing until there are 10 sts left on LH needle, yo, k2 tog, work to end – 3 buttonholes. Work even in ribbing as established until ribbing measures 1½", end on WS. Bind off in ribbing.

## FINISHING

With WS facing, fold pillow cover along marked rows, lapping ribbing with buttonholes over plain ribbing. Sew side seams. Sew on buttons. Insert pillow form into pillow and button.



WEB EXCLUSIVE

[www.berroco.com](http://www.berroco.com)

[Pattern Corrections](#) | [Abbreviations & Terms](#) | [Links](#) | [Handeze® Glove](#)  
[About Us](#) | [Privacy Statement](#) | [FAQs](#) | [Contact Us](#)

Berroco, Inc. 1 Tupperware Dr. Suite 4, N. Smithfield, RI 02896-6815 USA  
copyright 2012 Berroco