

[click to enlarge](#)[click to enlarge](#)[Schematic](#) | [Charts](#) |
[Abbreviations & Terms](#)

Lustra

[Find this Yarn](#)

Working with a larger-than-usual needle guarantees the softness and drape of this oversized lacy v-neck pullover.



[PDF Pattern Instructions](#)

(If you can't open this PDF file you need Adobe Acrobat Reader. Get it [here](#).)

SIZES

to fit bust sizes 30(34-38-42-46-50-54)"
shown in size 42"

FINISHED MEASUREMENTS

bust – 41½(46½-52-56-60-65½-68)"
length – 25½"

NOTE– this garment was designed with a very oversized fit. Please take that into consideration when selecting size.

MATERIALS

3(3-4-4-4-4-5) hanks **BERROCO LUSTRA** (100grs) #3162 Ratatouille
straight knitting needles sizes 5(3.75mm) and 10(6mm) or size to obtain gauge
size 5(3.75mm) circular needle, 24"
stitch markers

GAUGE

12 sts and 18 rows = 4" in lace chart pattern (blocked) with larger needles
18 sts and 22 rows = 4" in k2/p2 rib with smaller needles

K2/P2 Rib (multiple of 4 sts plus 2)

row 1 (ws) – p2, * k2, p2; rep from *

row 2 (rs) – k2, * p2, k2; rep from *

rep rows 1-2 for k2/p2 rib.

Stockinette Stitch (st st) (any # of sts)

knit rs rows, purl ws rows.

BACK

With smaller needles, cast on 102(114-130-138-146-162-170) sts. Work in k2/p2 rib for 2½", ending with a ws row. Change to larger needles.

next (dec) row (rs) – (k1, k2tog) 34(38-43-46-48-54-56) times, end k0(0-1-0-2-0-2) – 68(76-87-92-98-108-114) sts. Purl 1 row, decreasing 6(6-9-8-8-10-12) sts evenly across – 62(70-78-84-90-98-102) sts.

establish pattern (rs) – working from chart as indicated for size, start at A, work from B to C 3(3-5-5-5-5-7) times, then work to D. * Keeping in chart pat as est, work until chart has been worked 6 times (96 rows).

shape shoulders – bind off in st st loosely 6(8-9-10-11-12-13) sts at the beg of the next 4 rows, then 7(7-9-10-11-13-13) sts at the beg of the next 2 rows. Bind off remaining 24 sts for back neck.

FRONT

Work as for back to *. Work until chart pattern has been worked 3 times (48 rows). Place markers for center 42 sts. Continue in pats as est, working center 42 sts following neckline chart. On row 11 of neckline chart, work to red dot, join new yarn and complete row. Working both sides at the same time with separate yarn, work neckline decs as indicated on chart. Complete chart and beg shoulder shaping where indicated on chart (same row as back).

Block the front and back to measurements on schematics. Sew shoulder seams.

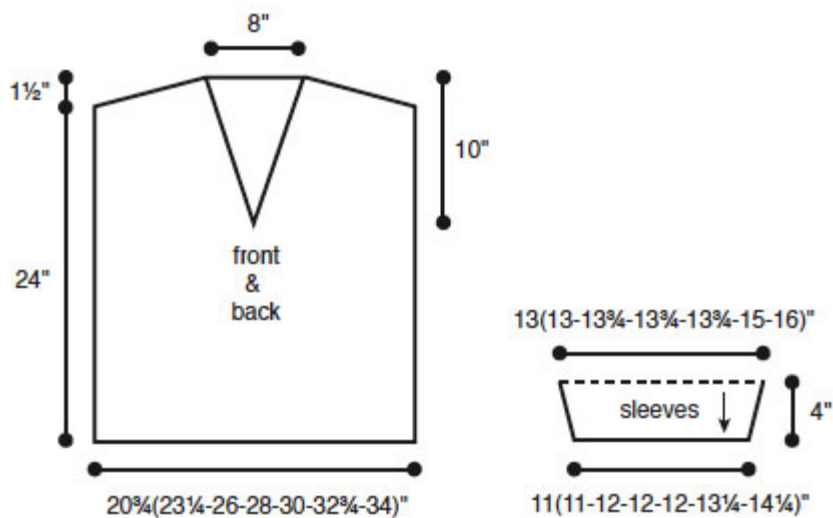
SLEEVES

Mark 6½(6½-7-7-7-7½-8)" down from shoulder on front and back. With smaller needles, pick up 58(58-62-62-62-68-72) sts evenly between markers. Work in k2/p2 rib for 5 rows.

next (dec) row – k1, ssk, work to last 3 sts, k2tog, k1. Keep sts in rib as est and work first and last 2 sts in st. Repeat dec row every 4th row 3 times more – 50(50-54-54-54-60-64) sts. Work straight until sleeve measures 4". Bind off in rib.

FINISHING

Sew side and sleeve seams. With circular needle, starting at left shoulder, pick up 48 sts to the point of v-neck, 48 sts to right shoulder and 38 sts across back neck. Note – you will need to pick up at back neck between sts as well as in every st to achieve correct number of sts. Join and purl 2 rnds. Bind off in purl.



key

rep rows 1-16 for pats

☐ = k on rs, p on ws

● = p on rs, k on ws

⊙ = yo

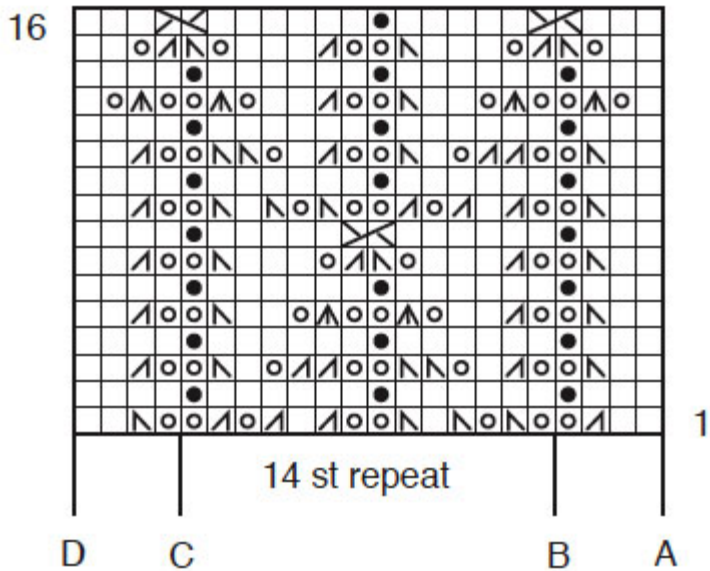
▧ = k2tog

▨ = ssk

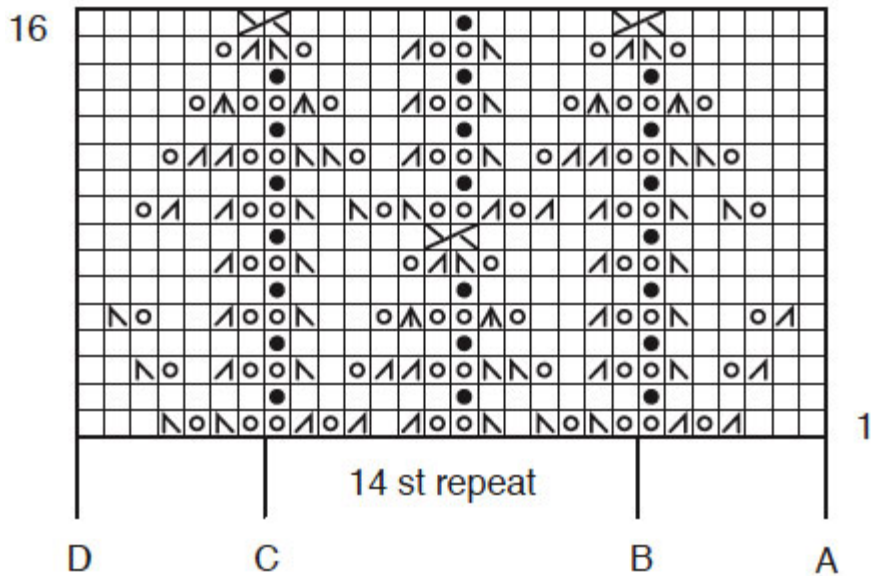
⚠ = slip 2, k1, p2sso

⊠ = p2tog, leave on LH needle,
purl first st again,
drop both sts from needle

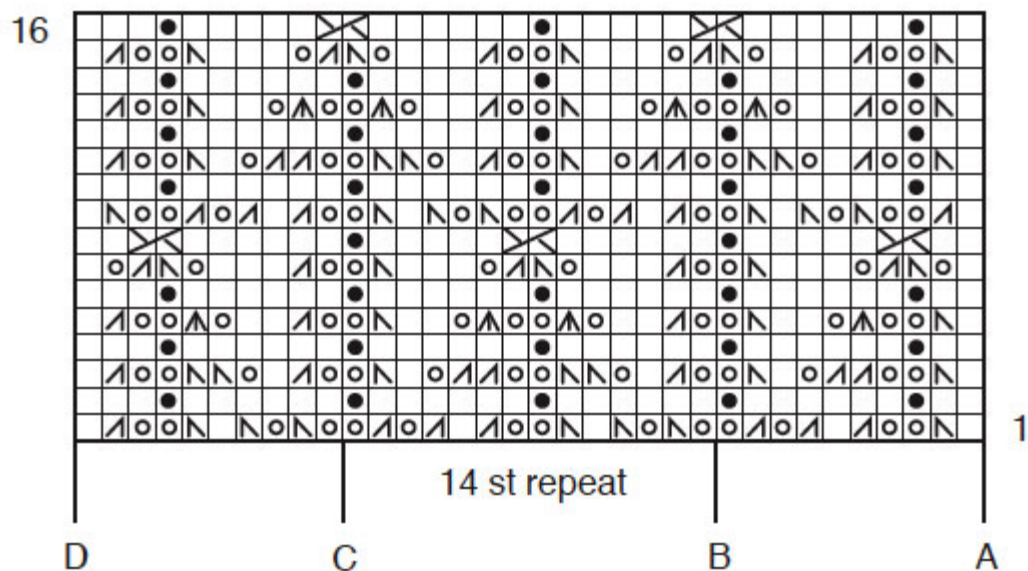
for size 38



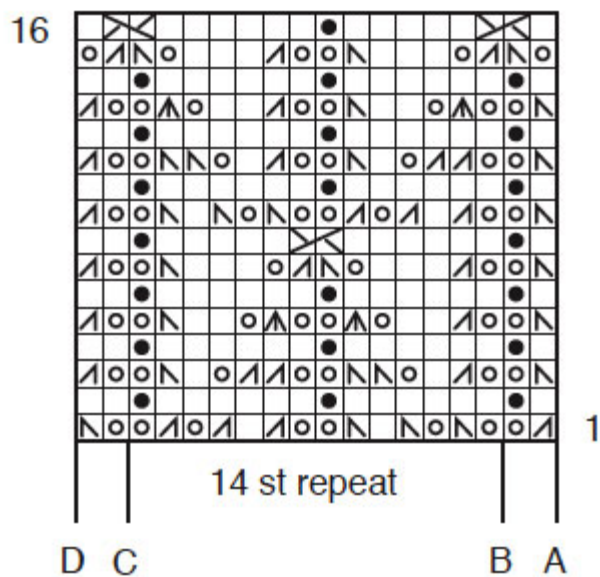
for size 42



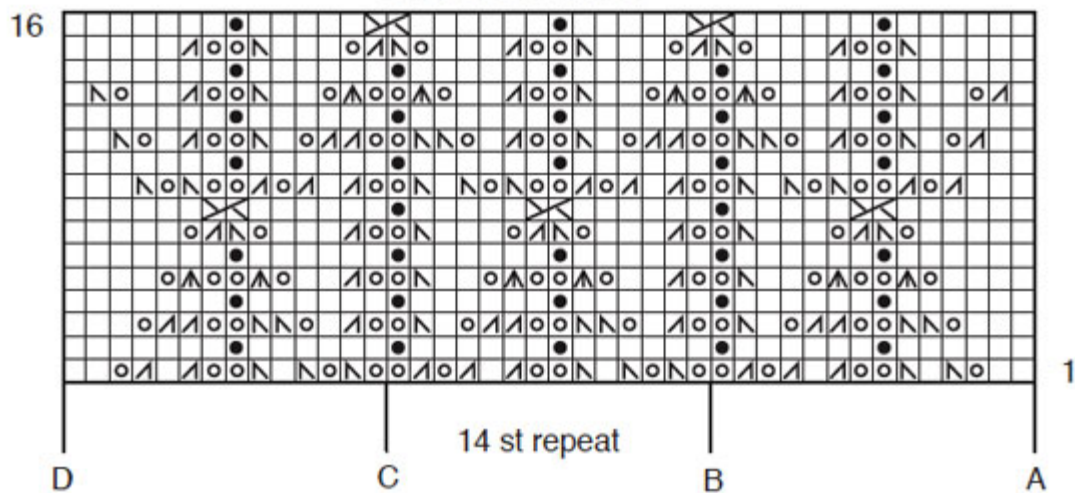
for sizes 30 and 46

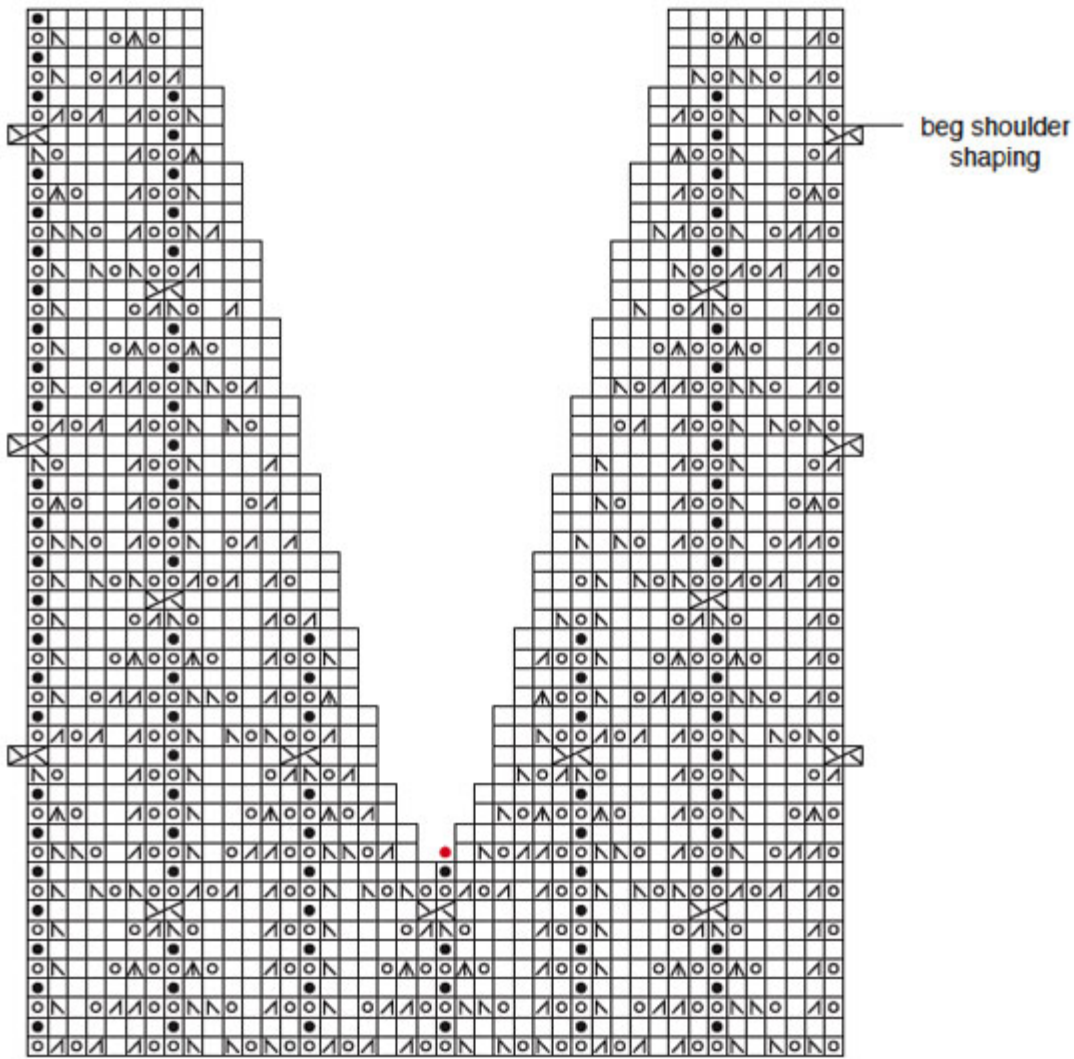


for size 54



for sizes 34 and 50





42 sts

WEB EXCLUSIVE

www.berroco.com

[Home](#) | [Yarn Shops](#) | [Yarns](#) | [Free KnitBits®](#) | [New This Season](#) | [Free Patterns](#) | [Blog](#) | [Multimedia](#)
[Pattern Corrections](#) | [Abbreviations & Terms](#) | [Links](#) | [Handeze® Glove](#)
[About Us](#) | [Privacy Statement](#) | [FAQs](#) | [Contact Us](#)

Berroco, Inc. 1 Tupperware Dr. Suite 4, N. Smithfield, RI 02896-6815 USA
copyright 2012 Berroco