

FREE  
PATTERNS

# Silent Night Tree Skirt

 knit in **Peruvia™**  
 Skill level: **Experienced**


KNIT



[Silent Night  
Capelet](#)



Our lovely aran knit tree skirt can also be a poncho by simply eliminating one of the sections. It's knit in **Peruvia™** and it buttons up with an assortment of buttons from JHB International, Inc.



[PDF Pattern Instructions](#)

(If you can't open this PDF file you need Adobe Acrobat Reader. Get it [here](#).)

One size

## SIZE

Approximately 36" across

## MATERIALS

6 Hanks [BERROCO PERUVIA](#) (100 grs), #7100 Blanco  
 36" Length circular knitting needle, size 10 (6.00 mm)  
 Cable needle (cn)  
 5 St markers  
 9 1" buttons from JHB International, Inc.

## NOTE 1

There are no gauge requirements for this project

## TREE SKIRT

With circular needle, cast on 83 sts, place marker, \* cast on 82 sts, place marker, rep from \* 3 times more, cast

WEB EXCLUSIVE  
[www.berroco.com](http://www.berroco.com)

on 83 sts – 494 sts. DO NOT join. Tree Skirt consists of 6 panels divided by markers. Keep 1 st at each end in Garter St. Knit 2 rows. Next row work decs before and after markers as shown on chart. Knit 2 rows.

**Establish Chart: Row 1 (RS):** K1, \* work Row 1 of Chart 1 to next marker, rep from \* to last marker, work Row 1 of Chart 1 to last st, end k1.

**Row 2:** K1, \* work Row 2 of Chart 1 to next marker, rep from \* to last marker, work Row 2 of Chart 1 to last st, end k1. Work in pat as established, working 6 repeats of Chart 1 across and working decs before and after markers as indicated on Chart 1. When 40 rows of Chart 1 have been completed, change to Chart 2. Work until Chart 2 has been completed, end on WS – 98 sts. Bind off.

## FINISHING

**Button Placket:** With RS facing, beg at cast-on edge of Tree Skirt, pick up and k100 sts along one short end.

**Row 1 (WS):** K4, \* p2, k8, rep from \* to last 6 sts, end p2, k4.

**Row 2:** K4, \* RT2 (see key to chart), p8, rep from \* to last 6 sts, end RT2, k4. Rep these 2 rows twice more, then rep Row 1 once, end on WS. Bind off.

**Buttonhole Placket:** With RS facing, beg at bound-off edge of Tree Skirt, pick up and k100 sts along the other short end. Work same as Button Placket for 3 rows, end on WS.

**Buttonhole Row (RS):** K4, \* RT2, p2, p2 tog, (yo) twice, p2 tog TBL, p2, rep from \* to last 6 sts, end RT2, k4.

**Following Row:** K4, \* p2, k3, k the first yo, p the 2nd yo, k3, rep from \* to last 6 sts, end p2, k4. Rep Rows 1 and 2 of Button Placket once more, end on WS. Bind off. Sew on buttons.

## KEY TO CHART

K on RS, p on WS

P on RS, k on WS

+ P in front and back on next st

SSK

K2 tog

RT2 - skip next st, k following st, k skipped st

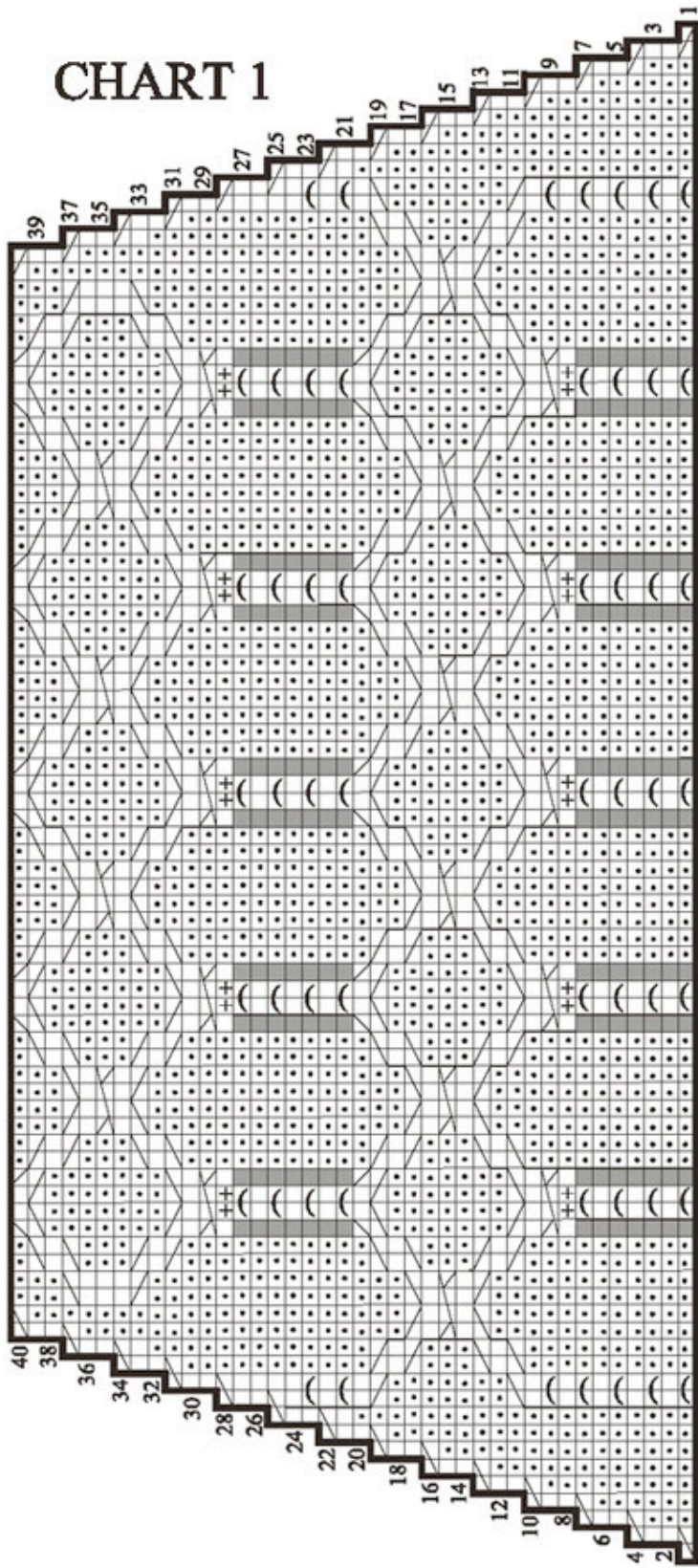
Sl 2 sts to cn and hold in BACK, k2, then p 2 from cn

Sl 2 sts to cn and hold in FRONT, p2, then k2 from cn

P2 tog twice

Sl 2 sts to cn and hold in BACK, k2, then k2 from cn

**NOTE:** Areas of chart shown as solid gray are only place holders for sts that do not exist at that point. Sts may be added at these points later on if so indicated.



# CHART 2

